



COMSOL Server

Manual

COMSOL Server Manual

© 1998–2015 COMSOL

Protected by U.S. Patents listed on www.comsol.com/patents, and U.S. Patents 7,519,518; 7,596,474; 7,623,991; 8,457,932; 8,954,302; 9,098,106; and 9,146,652. Patents pending.

This Documentation and the Programs described herein are furnished under the COMSOL Software License Agreement (www.comsol.com/comsol-license-agreement) and may be used or copied only under the terms of the license agreement.

COMSOL, COMSOL Multiphysics, Capture the Concept, COMSOL Desktop, LiveLink, and COMSOL Server are either registered trademarks or trademarks of COMSOL AB. All other trademarks are the property of their respective owners, and COMSOL AB and its subsidiaries and products are not affiliated with, endorsed by, sponsored by, or supported by those trademark owners. For a list of such trademark owners, see www.comsol.com/trademarks.

Version: COMSOL 5.2

Contact Information

Visit the Contact COMSOL page at www.comsol.com/contact to submit general inquiries, contact Technical Support, or search for an address and phone number. You can also visit the Worldwide Sales Offices page at www.comsol.com/contact/offices for address and contact information.

If you need to contact Support, an online request form is located at the COMSOL Access page at www.comsol.com/support/case.

Other useful links include:

- Support Center: www.comsol.com/support
- Product Download: www.comsol.com/product-download
- Product Updates: www.comsol.com/support/updates
- Discussion Forum: www.comsol.com/community
- Events: www.comsol.com/events
- COMSOL Video Gallery: www.comsol.com/video
- Support Knowledge Base: www.comsol.com/support/knowledgebase

Part number: CM010010

Contents

Introduction	5
Installing COMSOL Server	8
Installing COMSOL Server in Windows	8
Installing COMSOL Server in Linux and OS X	16
Firewalls	17
Starting COMSOL Server	18
Starting and Running COMSOL Server Locally in Windows	18
Starting COMSOL Server as a Windows Service	22
Starting COMSOL Server Manually in Windows	23
Starting COMSOL Server in Linux	25
Starting COMSOL Server in OS X	27
Logging in to COMSOL Server	27
COMSOL Server Administration	29
Overview	29
Monitor	30
User Database	31
Preferences	32
COMSOL Server Commands	37
Running Applications	39
Running Applications in a Web Browser	39
Running Applications in the COMSOL Client	46
Running Applications that use LiveLink Products	49

Running COMSOL Server on Multiple Computers	51
Installing COMSOL Server on Multiple Computers	51
Starting COMSOL Server on Multiple Computers	52
Setting up a Shared Working Directory	53
Sharing a COMSOL Server Installation	54
Configuring COMSOL Server	56
Configuring a Local User Database	56
Configuring Windows Authentication	60
Configuring Active Directory or LDAP	61
Advanced Login Configuration	63
Setting Up COMSOL Server for Secure Connections	67
Resetting the Administrator Password	68

Introduction

With a COMSOL Server™ license, a COMSOL application can be run in major web browsers on platforms such as Windows®, OS X, iOS, Linux®, and Android™. In the Windows® operating system, you can also run COMSOL applications by connecting to a COMSOL Server with an easy-to-install COMSOL® Client, available for download from www.comsol.com. COMSOL Server does not include the Application Builder, Physics Builder, and Model Builder tools that come with the COMSOL Desktop® environment.

A COMSOL runnable application is a COMSOL Multiphysics® MPH-file that, in addition to the model part, includes a custom user interface that you can run as a separate application or in a web client. To create such applications, use the Application Builder, which is included in the Windows® version of COMSOL Multiphysics. For more information on how to build applications, refer to the book *Introduction to Application Builder*.

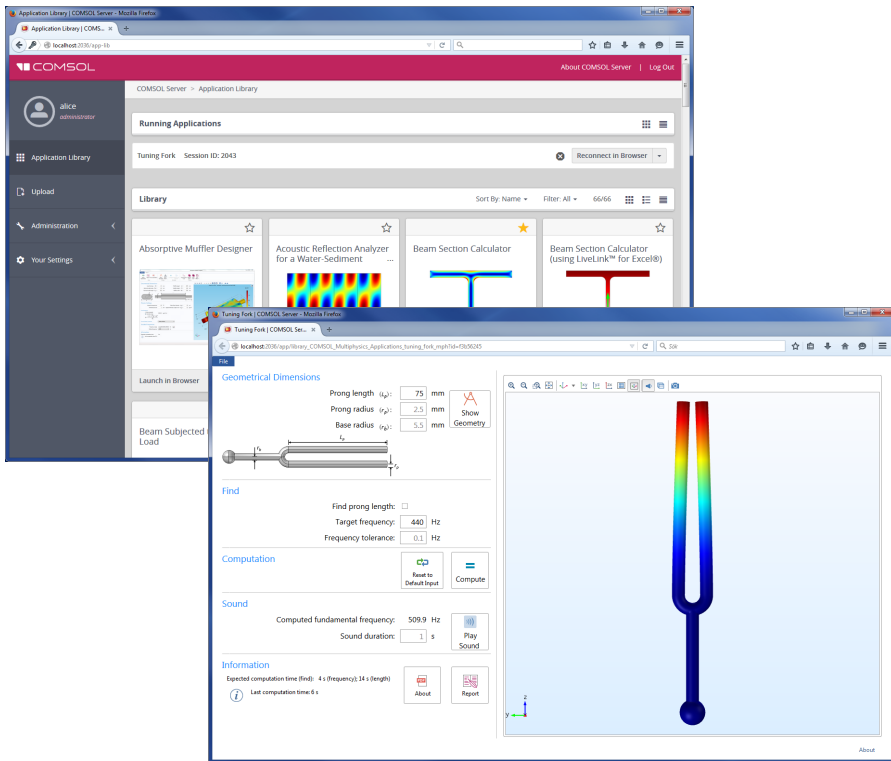
COMSOL Multiphysics and its add-on products are used to create an application. A license for the same add-on products is required to run the application from COMSOL Server. Users can run up to four applications per session through a single COMSOL Server license.

COMSOL Server is a multiuser service that can be run continuously on the host computer. It can be configured to start automatically upon booting. Optionally, COMSOL Server can be run on multiple computers to support more simultaneous users and concurrent applications than a single computer would support.

COMSOL Server contains administrative tools that allow you to create user accounts and user groups. You can also create user accounts based on a preexisting database of users on your system.

Additional resources, including video tutorials, are available online at www.comsol.com/video.

The figure below shows the COMSOL Server web interface and an application running in a web browser.



USERS AND ROLES IN COMSOL SERVER

Use the COMSOL Server web interface to assign usernames and passwords and to grant privileges. The *administrator* role can add and remove users as well as stop jobs. The *user* role is for running and uploading applications. The *guest* role is only for running applications.

ROLE	ADD/REMOVE USERS	UPLOAD APPLICATIONS	RUN APPLICATIONS
Administrator	Yes	Yes	Yes
User	No	Yes	Yes
Guest	No	No	Yes

There is also a group concept in COMSOL Server that you can use to manage groups of users. Use groups to grant access to different categories of applications that are relevant to that particular group.

COMSOL Server can maintain its own database of users and groups. You can also configure COMSOL Server to use the login mechanism of your operating system, such as Windows[®] Authentication or Lightweight Directory Access Protocol (LDAP).

Installing COMSOL Server

A COMSOL Server installation is similar to a COMSOL Multiphysics installation, the only difference being an additional step called **Server**.

For detailed information on installation, license files, and license management, see the *COMSOL Multiphysics Installation Guide*.



Before starting COMSOL Server you need to start a license manager. For more information on the FlexNet[®] license manager, see the *COMSOL Multiphysics Installation Guide*. You can download the document from www.comsol.com/iog. The FlexNet[®] license manager is installed together with COMSOL Server. A license server is not needed when running a trial license.

The default COMSOL Server installation directory for each platform is as follows:

- Windows[®]: C:\Program Files\COMSOL\COMSOL52\Server
- Linux[®]: /usr/local/comsol52/server
- OS X: /Applications/COMSOL52/Server

For information about installing COMSOL Server for multiple computers and sharing the installation, see [Running COMSOL Server on Multiple Computers](#).

Installing COMSOL Server in Windows

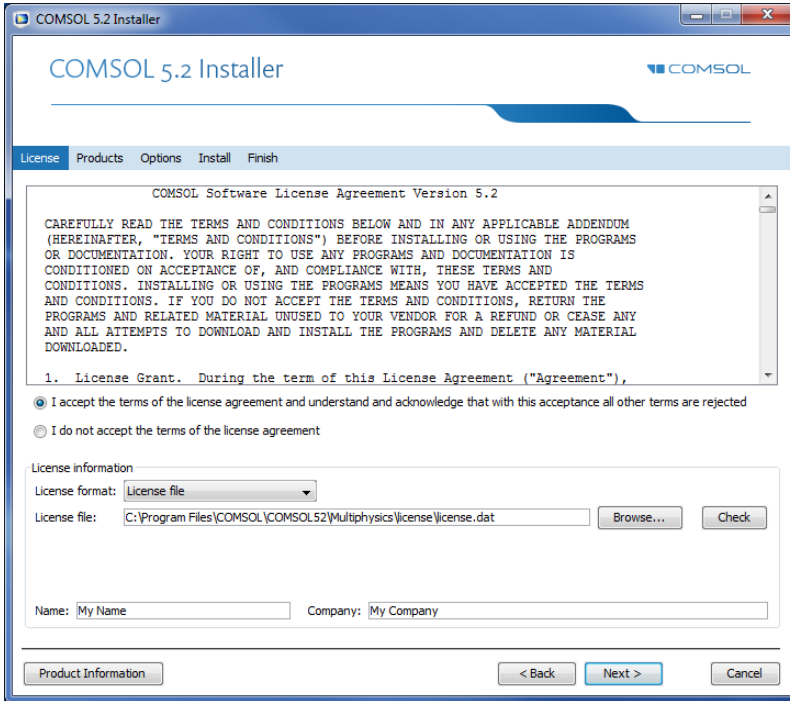
Start the installation by using the media that you have received or by using an Internet download. In the COMSOL installer, after selecting your preferred language, choose **New COMSOL 5.2 Installation**:



New COMSOL 5.2 Installation

LICENSE

In the next step, **License**, you are prompted for a passcode or license file. COMSOL Server will only function with a license file (that you get from your COMSOL representative).

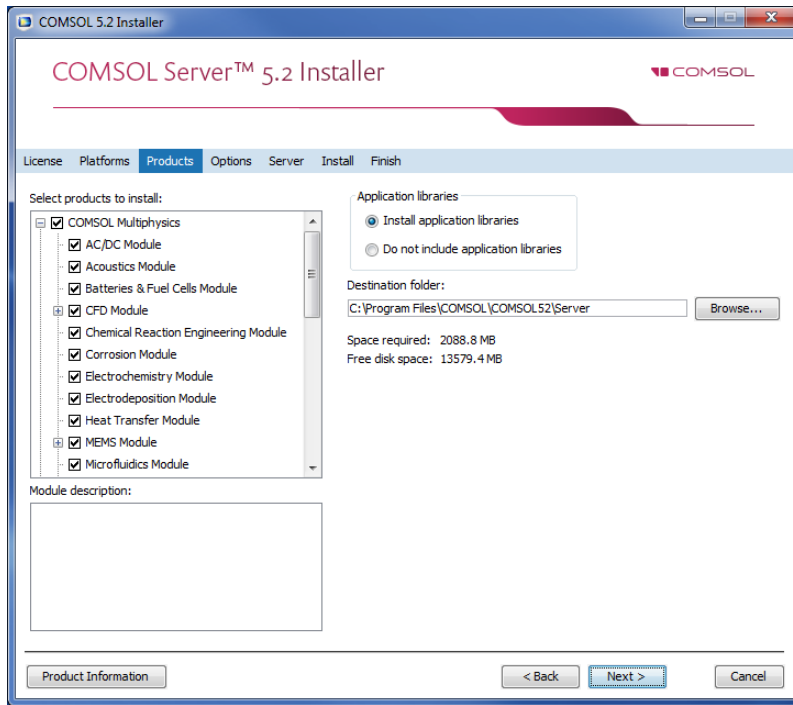


At this point, the COMSOL installer detects the type of license file used. The following instructions assume that the license file used during installation corresponds to a COMSOL Server license.

PRODUCTS

In the next step, **Products**, select the installation location and which software products and components you want to install. Licensed COMSOL products are

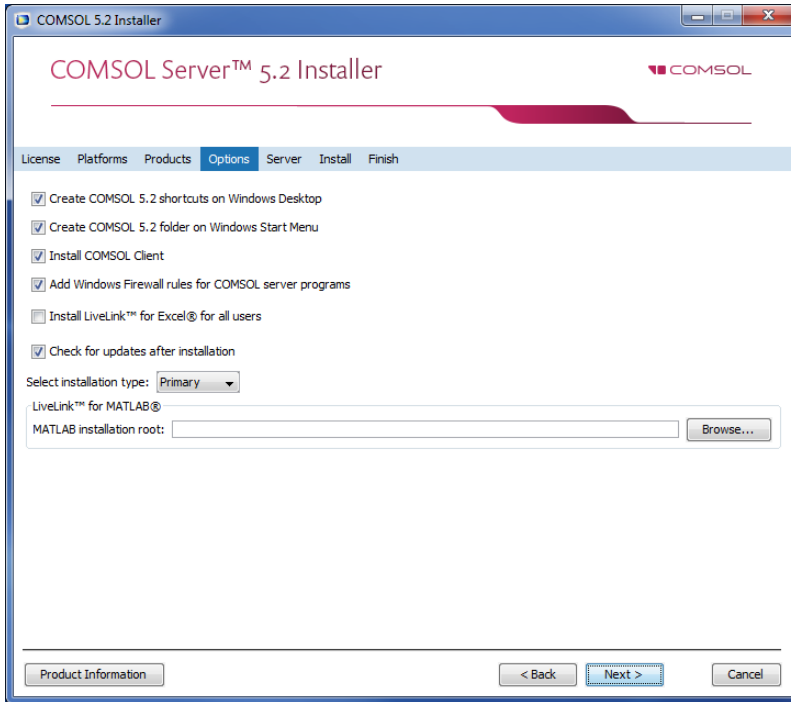
selected by default. There are options to include application libraries and software components for the add-on products.



OPTIONS

In the **Options** step, you can choose to install Start menu shortcuts (Windows[®] operating system only), install COMSOL Client, install LiveLink[™] for Excel[®] (only available if you have licensed LiveLink[™] for Excel[®]) for all users, enable checking for updates after installation, and specify the location for a MATLAB[®] installation (only available if you have licensed LiveLink[™] for MATLAB[®]). You can also select the type of installation from the **Select installation type** list: **Primary** (the default) or **Secondary**. When running COMSOL Server on multiple computers, the main server will be the *primary server* and the rest will be *secondary servers*. If not installing COMSOL Server to run on multiple computers, choose **Primary**. For information about installing COMSOL Server for multiple computers, see

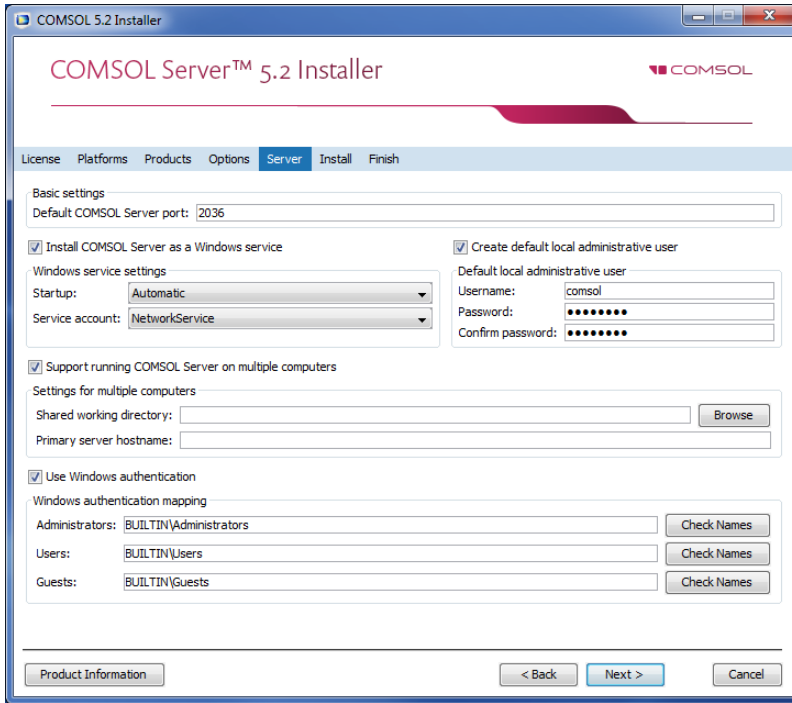
Running COMSOL Server on Multiple Computers.



SERVER

The next **Server** step does not have any corresponding step in the COMSOL Multiphysics installer but is unique to a COMSOL Server installation. This step makes it possible to set up COMSOL Server as a Windows® service and enables

you to configure an initial user database. The **Server** page in the COMSOL Installer includes the following settings (see the following sections):



Settings for Launching COMSOL Server

The basic setting is the **Default COMSOL Server port**, which is set to 2036. By default, COMSOL Server uses a range of ports from 2036 and above.

There are two different ways to install COMSOL Server in Windows[®]. If you select the **Install COMSOL Server as a Windows service** check box (the default), then COMSOL Server is installed as a Windows[®] service. Otherwise COMSOL Server is installed as a regular executable. Use the **Startup** list to configure how to start COMSOL Server when installed as a Windows[®] service. Choose **Disabled**, **Manual**, **Automatic** (the default), or **Automatic (Delayed Start)**. With the default choice of **Automatic**, the installed COMSOL Server service is configured to start automatically when the host computer boots or restarts. This setting provides the highest availability to users of the installed server. With **Automatic (Delayed Start)** the service also starts automatically but delayed until all automatic-start threads have finished starting. If you select **Manual** or **Disabled**, the COMSOL Server service will not be started after the installation.

In the **Service account** list, by default, the installer provides the predefined **LocalService** service account. It is recommended that you use the **LocalService** account to run COMSOL Server service if you run COMSOL server on a single computer; it has sufficient but limited privileges intended for running local services. Alternatively another account with limited privileges can be used. You can choose the predefined **LocalService**, **LocalSystem**, and **NetworkService** accounts in Windows[®], which have no password. When using other accounts, choose Custom and provide a username and password.



If you choose **Manual** or **Disabled** for the COMSOL Server service's **Startup** setting, you can enable or start the services from the command line or by using the **Start COMSOL Server** shortcut installed on the **Start** menu in Windows[®]. The same configuration options are also available in the snap-in **Services** in the **Microsoft Management Console** (search for services from the Windows[®] **Control Panel**).

Creating a Local Administrative User for COMSOL Server

Select the **Create default local administrative user** check box to create a default username and password for an administrator account that is provided when COMSOL Server is installed as a Windows[®] service. You can use that account to log in to the web interface after installation to perform administrative tasks. In addition to this administrator, which is local to the COMSOL Server user database, you can add administrator accounts to that user database using Windows authentication (see below).



The user account entered here can only be used to log in to COMSOL Server running as a Windows[®] service. If COMSOL Server is not installed as a service, it will ask for a default username and password when it is first launched.

When selected it creates:

- A local user in the file <COMSOL Server installation directory>\bin\tomcat\conf\login.properties.
- A roles file <COMSOL Server installation directory>\bin\tomcat\conf\roles.properties. The roles file assigns administrative rights to the user you specify.

When COMSOL Server is started for the first time as a service, the command <COMSOL Server Installation Directory>\bin\win64\comsolservice

copies the password and roles files from the installation directory to the service user's home directory in:

- <User's home directory>\\.comsol\52server\login.properties, and
- <User's home directory>\\.comsol\52server\server\roles.properties

For the LocalService account, the home directory typically is
C:\Windows\ServiceProfiles\LocalService

If you do not create a local administrator, you cannot log in using the COMSOL Server web interface unless at least one user is configured with Windows[®] Authentication or LDAP, for Linux[®] and OS X, holding the administrative role. You can also configure the administrator later by manually editing configuration files.

Support Running COMSOL Server on Multiple Computers

For information about the settings for running COMSOL Server in multiple computers, see [Running COMSOL Server on Multiple Computers](#).

Using Windows Authentication

Select **Use Windows authentication** to use Windows[®] authentication in addition to the users from the local user database and the administrator you may have chosen to provide in the settings above. Windows[®] authentication is only available when you install COMSOL Server on a computer using the Windows[®] operating system.

The text fields under **Windows authentication mapping** for **Administrators**, **Users**, and **Guests** associate Windows[®] groups or built-in security principals, separated by semicolons, with COMSOL Server roles for administrators, users, and guests, respectively. The defaults are BUILTIN\Administrators, BUILTIN\Users, and BUILTIN\Guests, respectively, which refer to users in such Windows[®] groups on the computer where you install COMSOL Server. Click the corresponding **Check Names** button to verify that the group names are valid. If you type only a name (Guests, for example), the installer finds its location and prepends it in the text field when you click **Check Names**. You can only map a specific Windows[®] group to a single COMSOL Server role.



You must make sure the Windows[®] groups you associate with the roles exist in your Windows[®] installation, otherwise the mapping for the missing groups will not be in effect until they are created. If you leave one of the roles text fields empty, no user will be given this role.

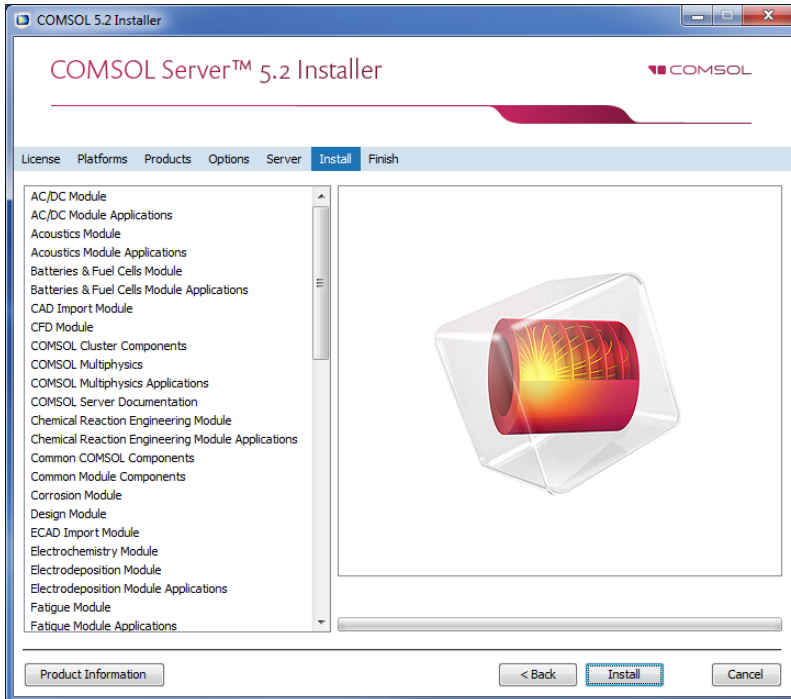
See [Configuring COMSOL Server](#) for more information about Windows® authentication.

Using LDAP Authentication

LDAP configuration is required after the installation. See [Configuring COMSOL Server](#).

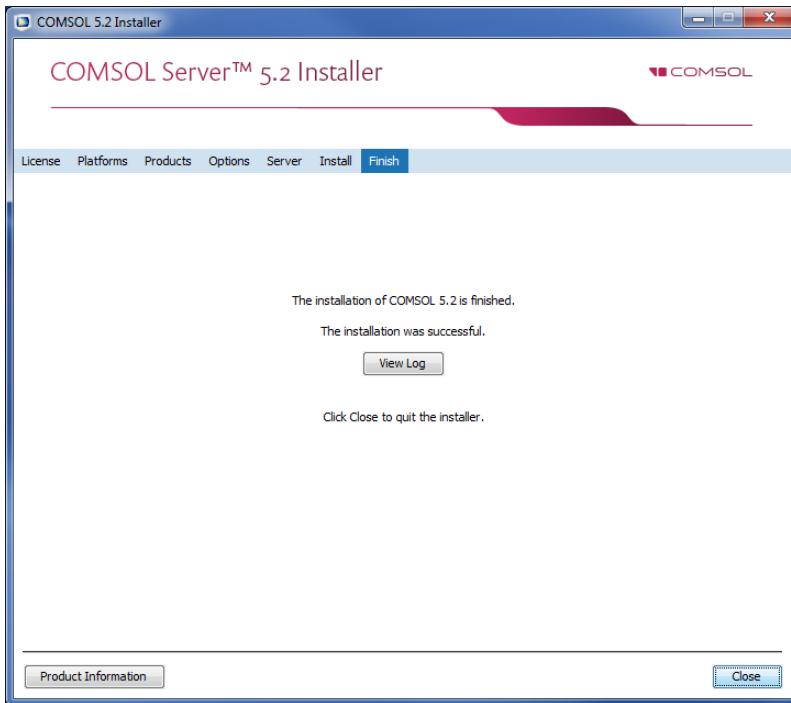
INSTALL

The **Install** step lets you monitor the installation progress.



FINISH

The last step **Finish** lets you view an installation log in the case there are warnings or errors.



Installing COMSOL Server in Linux and OS X

When installing in the Linux[®] and OS X operating systems the Server step contains the setting for a default administrative user account. See [Starting COMSOL Server](#) for more information about how to automatically launch COMSOL Server after installation on Linux[®] and OS X. You can also select to support running COMSOL Server on multiple computers (see [Running COMSOL Server on Multiple Computers](#)).

CREATING A LOCAL ADMINISTRATIVE USER FOR COMSOL SERVER

Select **Create a local administrative user for COMSOL Server** and provide a username and password to create a default administrative account that is provided when COMSOL Server is started as a service.

When selected the installer creates:

- A local user in the file `<COMSOL Server installation directory>/bin/tomcat/conf/login.properties`.
- A roles file `<COMSOL Server installation directory>/bin/tomcat/conf/roles.properties`. The roles file assigns administrative rights to the user you specify.

When COMSOL Server is started for the first time as a service, the command `<COMSOL Server Installation Directory>/bin/comsol server -silent -login never`, copies the password and roles files from the installation directory to the service user's home directory in:

- `<User's home directory>/comsol/52server/login.properties`
- `<User's home directory>/comsol/52server/server/roles.properties`

If you do not create an administrator, you can start COMSOL Server as the user you intend COMSOL Server with and manually enter the password.

For security reasons, it is not recommended to use an account with administrative privileges to run COMSOL Server.

Firewalls

By default, COMSOL Server uses a range of ports from 2036 and above. You must open up firewalls that exist between the server and your users. Open up for incoming TCP connections to those ports. To improve security, you may reduce the IP address range to known potential IP addresses for your users.

Starting COMSOL Server

Starting and Running COMSOL Server Locally in Windows

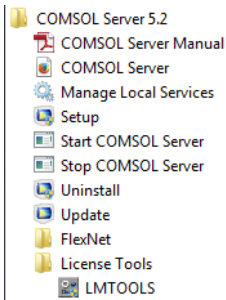
This section describes the steps that are necessary for starting and running COMSOL Server locally on a Windows[®] computer. These instructions apply if COMSOL Server will be used locally by a single user or if COMSOL Server will run on a computer that is not connected to a network.

For making COMSOL Server available to other users or for running in OS X or Linux[®], see the subsequent sections.

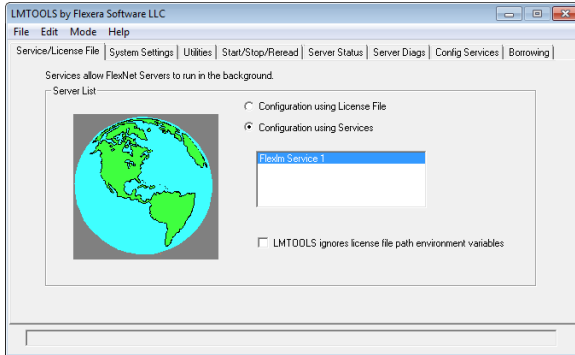
When installing and running COMSOL Server locally according to the instructions below, you will be running as an administrative user.

Before starting COMSOL Server you need to start a license manager. For more information on the FlexNet[®] license manager and license files, see the *COMSOL Multiphysics Installation Guide*. You can download that document from www.comsol.com/iog. The FlexNet[®] license manager is installed together with COMSOL Server.

From the Start Menu, select **License Tools>LMTTOOLS**. This starts the license manager utility program.

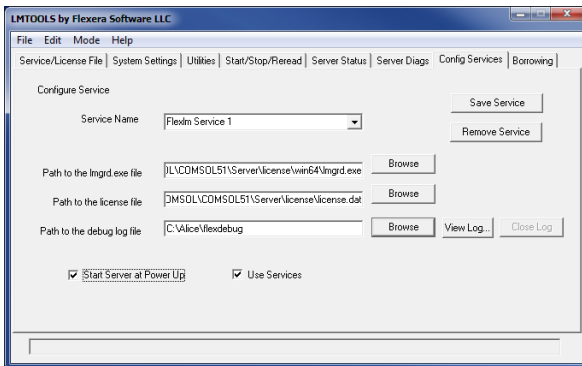


In the first **Service/License File** page, select **Configuration using Services**.



This setting allows the license manager to start automatically when your computer is rebooted.

Click the **Config Services** page.



In this page you specify the path to:

- The license manager executable file `lmgrd.exe`
- The license file `license.dat`
- A debug log file

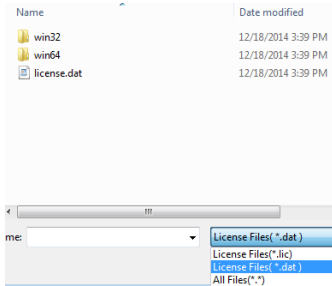
The license manager executable file and the license file are located in the installation directory. By default the locations are:

`C:\Program Files\COMSOL\COMSOL52\Server\license\win64\lmgrd.exe`

and

`C:\Program Files\COMSOL\COMSOL52\Server\license\license.dat`

respectively. Note that when browsing to the location of the license file you need to change the filter of the file browser from the default .lic to .dat, as shown in the figure below.

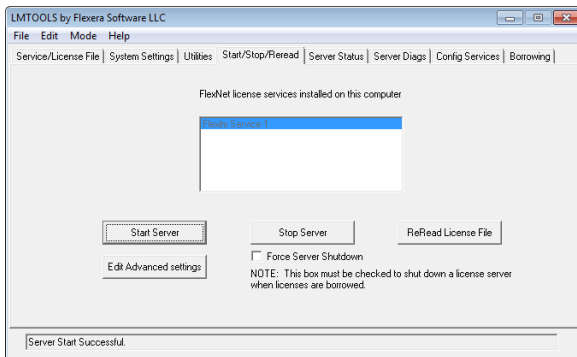


The license file is automatically copied to the license directory by the COMSOL Server installer. In addition, if the original license file given to you by your COMSOL representative had a different name it will automatically be changed to `license.dat`.

For the license manager to start automatically if your computer is rebooted, select the **Use Services** and **Start Server at Power Up** check boxes.

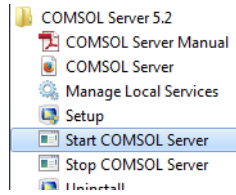
To save your settings, click **Save Service**.

The next step is to start the license manager. Go to the page **Start/Stop/Reread**. Click **Start Server**. (Server in this context refers to the license manager server software and not COMSOL Server.) If the license manager started successfully, a message **Server Start Successful** is displayed at the bottom of the window.

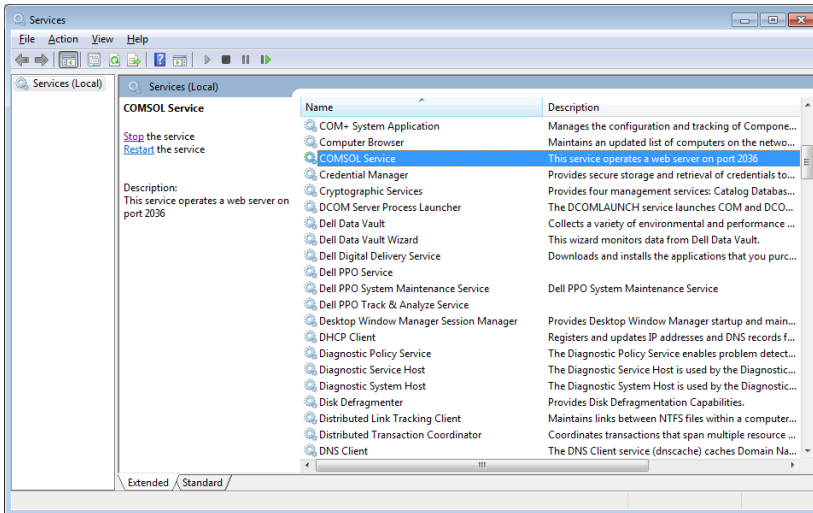


If the server failed to start, refer to the *COMSOL Multiphysics Installation Guide*.

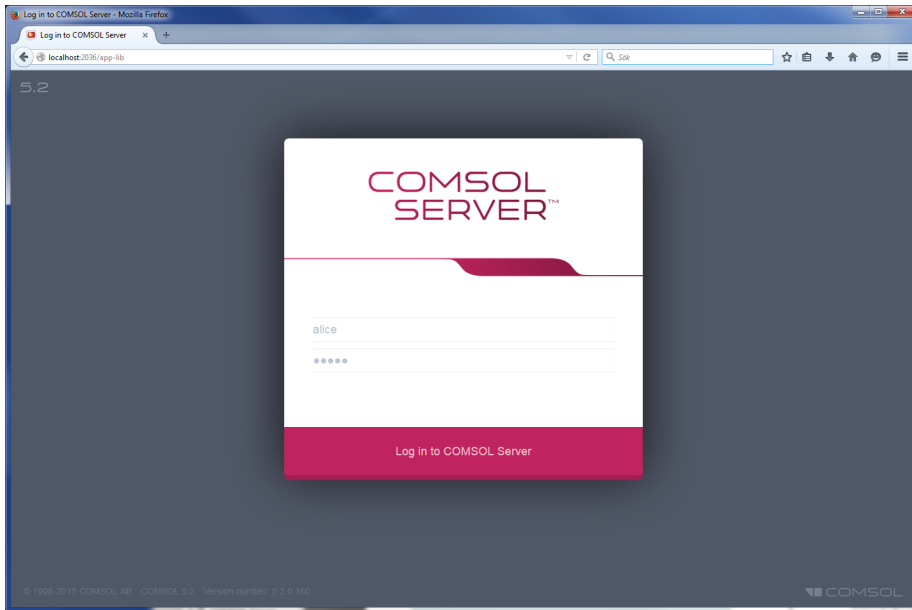
The next step is to start the COMSOL Server. From the Start menu, select **Start COMSOL Server**.



This will start COMSOL Server as a service, COMSOL Server 5.2 Service, which you can see in the Windows® Services window. In this case, port 2036 is used. If this port is not available, then the next available port will be used.



You can now log in to COMSOL Server from a web browser or COMSOL Client. Assuming you are logging in from a web browser, start your web browser and type `http://localhost:2036` in the address bar.



You are now prompted for the username and password that you specified during the installation. You can now continue reading the section [Running Applications](#).

Starting COMSOL Server as a Windows Service

By default, COMSOL Server is installed as a Windows[®] service that is set to start automatically. In this case, a link to the COMSOL Server web interface is installed on the **Start** menu as **COMSOL Server**. See [Logging in to COMSOL Server](#) for more information about accessing the web interface.

To manually start or stop the COMSOL Server service, or to configure if it is started automatically, use the **Manage local services** shortcut installed on the **Start** menu. The same configuration options are also available in the snap-in **Services**, in

the **Microsoft Management Console** (search for services from the Windows **Control Panel**).



Before starting COMSOL Server you need to start a license manager. For more information on the FlexNet[®] license manager, see the *COMSOL Multiphysics Installation Guide*. You can download the document from www.comsol.com/iog. The FlexNet[®] license manager is installed together with COMSOL Server.

Starting COMSOL Server Manually in Windows

You can start COMSOL Server by using the shortcut installed on the **Start** menu as **COMSOL Server**, by double-clicking the Windows[®] executable in a file browser, or from the command window.



When COMSOL Server has been installed as a Windows service, the shortcut for starting manually is not available on the **Start** menu. It is not recommended to start COMSOL Server manually when the service is running. Since the service runs under a special system user account, it does not share its application and user database with COMSOL Server started manually.

The COMSOL Server executable is located at:

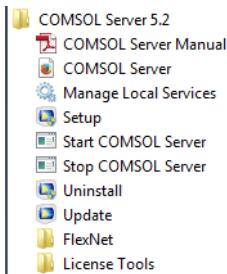
```
<Installation directory>\bin\win64\comsolserver.exe
```

where **win64** corresponds to a 64-bit installation (**win32** for a 32-bit installation).

An example of a typical **<Installation directory>** is:

```
C:\Program Files\COMSOL\COMSOL52\Server\bin\win64
```

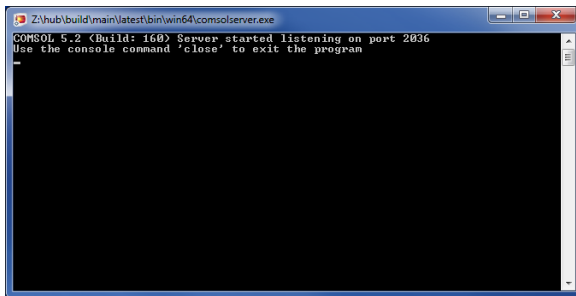
The figure below shows the **Start** menu items for COMSOL Server:



To start COMSOL Server from a command window, type

```
<Installation directory>\bin\win64\comsolserver.exe
```

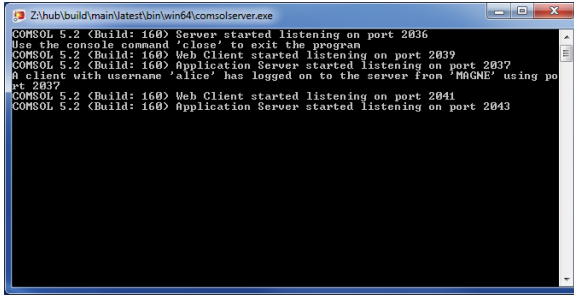
For both methods of starting COMSOL Server, the command window displays a short message that COMSOL Server has started and which port number is used.



In case the default port number 2036 is busy, subsequent port numbers are searched until a free port number has been found (or you can set the port number manually).

If you are starting COMSOL Server for the first time from your current account, you are prompted for an initial administrator. You can use this administrator account to add users with the COMSOL Server web interface at <http://localhost:2036> (assuming that port number 2036 is free).

When additional users log in to COMSOL Server, information on which port numbers are used is displayed in the command window.



```
Z:\hub\build\main\latest\bin\win64\comsolserver.exe
COMSOL 5.2 (Build: 160) Server started listening on port 2036
Use the console command 'close' to exit the program
COMSOL 5.2 (Build: 160) Web Client started listening on port 2039
COMSOL 5.2 (Build: 160) Application Server started listening on port 2037
A client with username 'alice' has logged on to the server from 'MOSE' using po
rt 2037
COMSOL 5.2 (Build: 160) Web Client started listening on port 2041
COMSOL 5.2 (Build: 160) Application Server started listening on port 2043
```

Once started, see [Logging in to COMSOL Server](#) for how to access the COMSOL Server web interface.

Starting COMSOL Server in Linux

To start COMSOL Server manually, type

```
<Server installation>/bin/comsol server -silent -login never
```

If you are starting COMSOL Server for the first time from your current account, you are prompted for the initial administrator of COMSOL Server. You can use this administrator account to add users with the COMSOL Server web interface at <http://localhost:2036> (assuming that port number 2036 is free).

SYSTEMD SERVICE

Use the following instructions to start COMSOL Server in a Linux version that includes systemd:

Create a file `/usr/lib/systemd/system/comsolserver52.service` with content similar to:

```
[Unit]
Description=COMSOL Server 5.2
Wants=network.target network-online.target
After=network.target network-online.target

[Service]
Type=forking
User=comsoluser
Group=comsolgroup
TimeoutSec=300
```

```
ProtectHome=off
ExecStart=/usr/local/comsol52/server/bin/comsol service
```

```
[Install]
WantedBy=multi-user.target
```

You only need to replace the values for **User** and **Group**. Then run:

```
systemctl enable /usr/lib/systemd/system/comsolserver52.service
```

to activate the service and

```
systemctl start comsolserver52
```

to start it.

BOOT SCRIPT

This section is applicable for older Linux versions that do not include **systemd**. For COMSOL Server to start automatically at boot up, you need to add Bourne shell commands to the appropriate boot script. You must be a superuser (root) to edit boot scripts.



For security reasons, it is recommended that the daemons are not started as a user with administrative privileges. Instead, use a dedicated username to start the license manager.

Add the following text to the end of the file `rc.local` in the `/etc` directory of your Linux[®] system:

```
FP=<Server installation>
MYUSER=username
if [ -x $FP/bin/comsol ]; then
    su $MYUSER -c "umask 022; $FP/bin/comsol server -silent -login never" &
fi
```

Replace the installation directory with your actual installation directory, and `username` with the username that you want to have to run the service.



You should not use the root user or another user with system access. Create a special user for COMSOL Server with limited system access.

Starting COMSOL Server in OS X

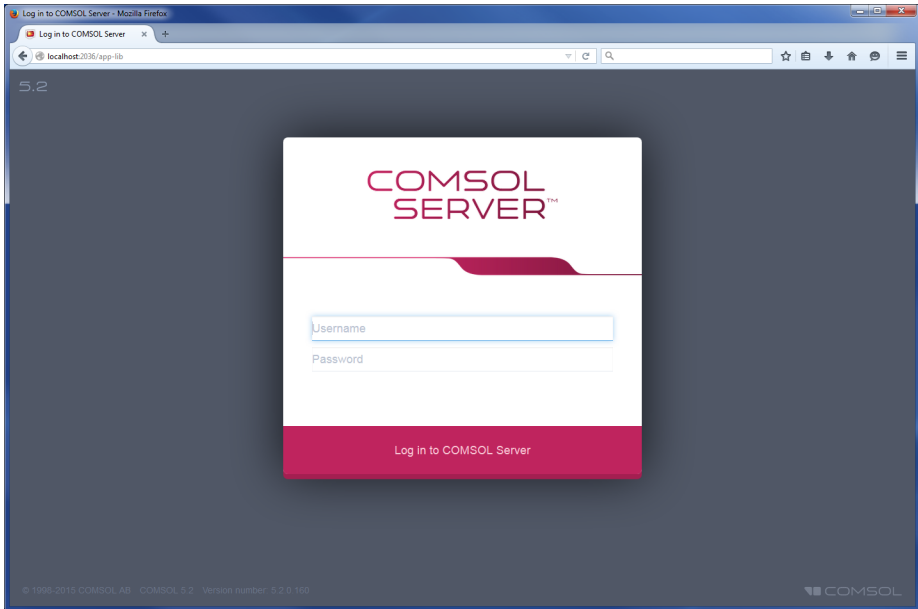
To start COMSOL Server manually, type

```
<Installation directory>/bin/comsol server
```

If you are starting COMSOL Server for the first time from your current account, you are prompted for an initial administrator of COMSOL Server. You can use this administrator account to add users with the COMSOL Server web interface on <http://localhost:2036>.

Logging in to COMSOL Server

In a web browser, go to <http://localhost:2036> (if you are accessing it remotely, use the computer name—computer name and domain, or the local IP address—of your server instead of localhost). If the port number 2036 is taken, then COMSOL Server will use the next available port number: 2037, 2038, and so on. Log in to COMSOL Server with your username and password.



Press return or click **Log in to COMSOL Server**. If you log in for the first time, you must also read the COMSOL Software License Agreement and click **Accept** to enter the COMSOL Server web interface. A user only needs to accept the license agreement once.

After five failed consecutive attempts to log in to COMSOL Server using the web interface, you will be locked out for five minutes before you can log in again.

You can log out from COMSOL Server by clicking **Logout** in the upper-right corner of the COMSOL Server web interface.

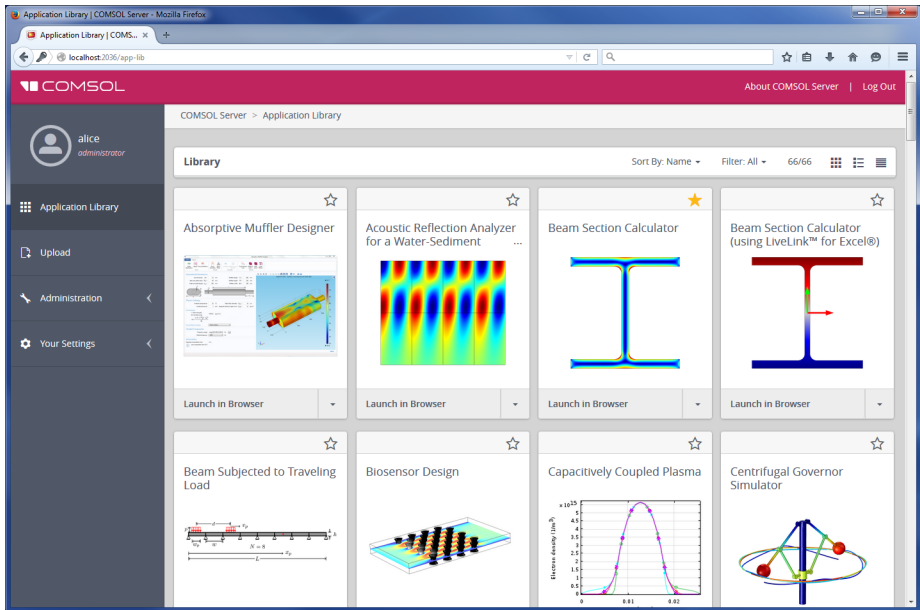
As an alternative to logging in from a web browser, you can log in from the COMSOL Client for Windows[®]. For more information see [Running Applications in the COMSOL Client](#).

COMSOL Server Administration

Overview

COMSOL Server can be managed through its web interface. Log in using an administrator username and password. Once logged in, you have access to an **Administration** section in the web interface with windows for **Monitor**, **Sessions**, **User Database**, and **Preferences**.

The figure below shows the Administrator page in the COMSOL Server web interface.

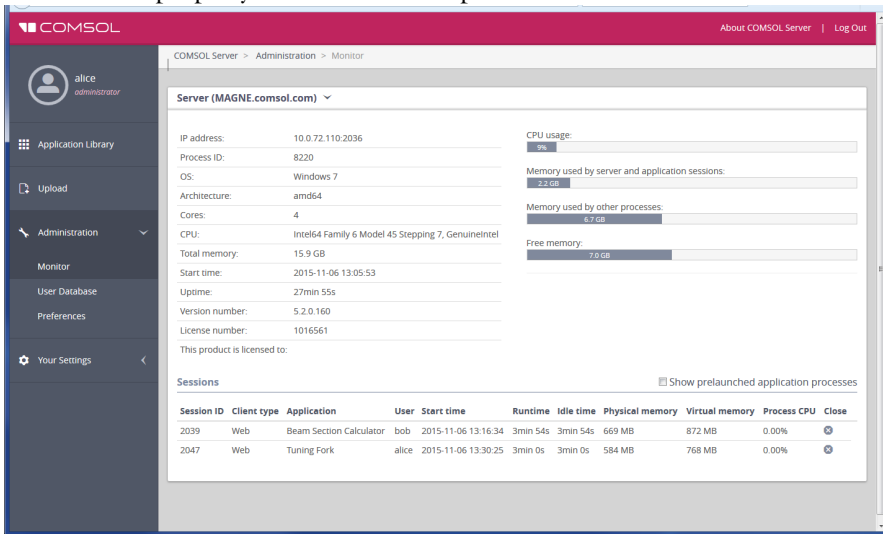


Users cannot access the Administration tools; guests cannot access the Administration tools and cannot upload applications.

You can filter the applications by favorite status, application visibility (Public, All groups, Private), or by individual groups (see [Sorting and Filtering Applications](#)). See also [Setting Up COMSOL Server for Secure Connections](#).

Monitor

On the **Monitor** page you find information including: the local IP address; OS and architecture; the start time and uptime; and CPU and memory use. There is also an overview of the running application sessions with the session ID; application; user; start time, runtime, and idle time; and memory and CPU usage. Click the column header for a session property to sort the application sessions alphabetically based on that property. Click **Close** to stop a session.

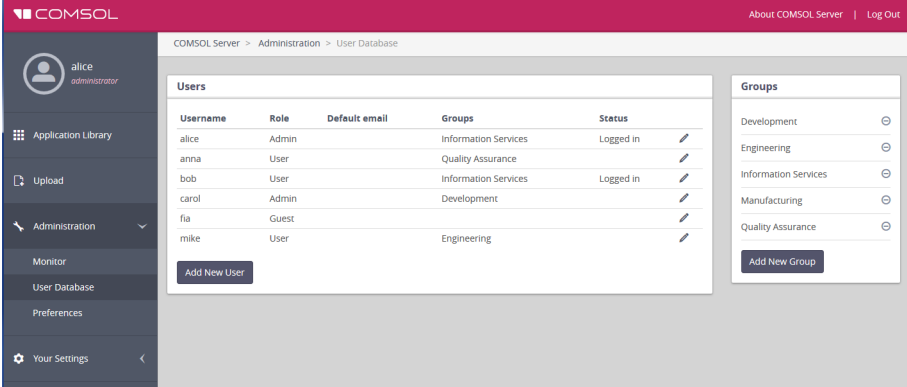


Selecting the **Show prelaunched application processes** check box enables the display of prelaunched application processes in the list of **Application Sessions**. A prelaunched application process is used to speed up the launch of new applications and does not check out any COMSOL Server license.

The **Client type** can be either **Web** or **Native**. **Web** means that the application is run in a web browser. **Native** means that the application is run as a native Windows[®] application using the COMSOL Client for Windows[®].

User Database

On the **User Database** page, you can add users and groups to the server's user database. See [Adding and Editing Users and Groups](#)



The screenshot shows the COMSOL User Database interface. The top navigation bar includes the COMSOL logo, the user 'alice administrator', and links for 'About COMSOL Server' and 'Log Out'. The breadcrumb trail is 'COMSOL Server > Administration > User Database'. The left sidebar contains navigation options: Application Library, Upload, Administration (expanded), Monitor, User Database (selected), Preferences, and Your Settings. The main content area is divided into two panels: 'Users' and 'Groups'. The 'Users' panel contains a table with columns for Username, Role, Default email, Groups, and Status. The 'Groups' panel contains a list of groups with expand/collapse icons and an 'Add New Group' button.

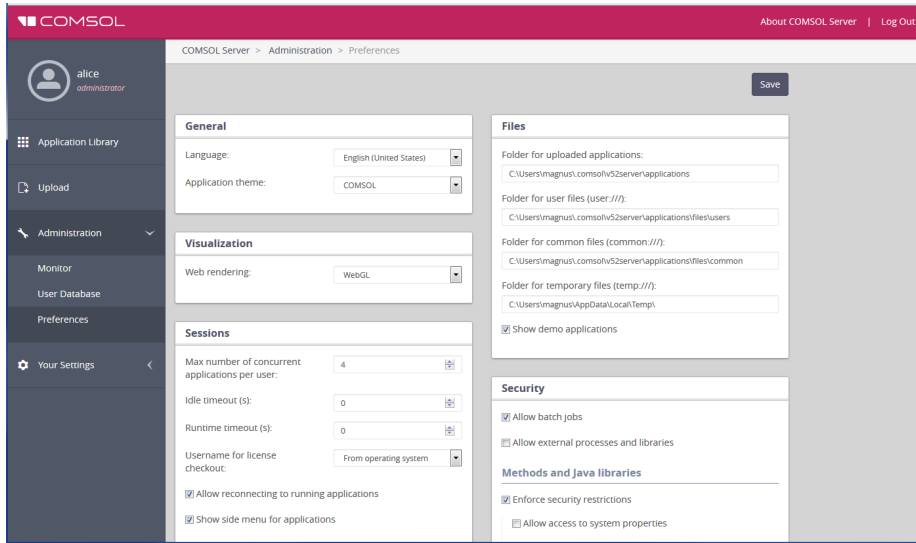
Username	Role	Default email	Groups	Status
alice	Admin		Information Services	Logged in
anna	User		Quality Assurance	
bob	User		Information Services	Logged in
carol	Admin		Development	
fia	Guest			
mike	User		Engineering	



If, for example, a new user logs in, you need to click refresh in browser to update the **User Database** page.

Preferences

On the **Preferences** page you access server administrative preferences and settings.



Under **General**, you can control the following settings:

- Choose the language to use for COMSOL Server from the **Language** list. COMSOL Server supports the same languages as the COMSOL Desktop user interface.
- Choose a theme for the application’s look and feel from the **Application Theme** list: Choose **COMSOL** for a look and feel that is similar to the COMSOL Desktop user interface, or choose **COMSOL Website** for a look and feel that is more adapted for display on the web.

In addition, the settings in the following tables are available under **Advanced**:

FILES

The table below summarizes the settings in the **Files** section.

SETTING	DESCRIPTION
Folder for uploaded applications	Folders for MPHAPP-files.
Folder for user files (user://)	Folders for files referred to in MPHAPP-files.
Folder for common files (common://)	Common storage area for files created by applications.

SETTING	DESCRIPTION
Folder for temporary files (temp://)	Storage area for temporary files created by applications.
Show demo applications	Include applications installed with COMSOL products.

VISUALIZATION

The table below summarizes the settings in the **Visualization** section.

SETTING	DEFAULT	DESCRIPTION
Web rendering	WebGL	Rendering method when running in a web browser: WebGL™ or Images from server.

WebGL is an emerging standard for interactive 3D and 2D graphics in web browsers. The option **Images from server** is used for browsers that do not support WebGL. It renders by generating images instead of offering interactive graphics. The COMSOL Client for the Windows® operating system provides the same interactive graphics rendering options as the COMSOL Desktop user interface: **OpenGL**, **DirectX**, and **Software**. These options are chosen from the COMSOL Desktop Startup menu icons.

SECURITY

The following security settings are available on the **Preferences** page in the COMSOL Server web interface when you are logged in as an administrator. (The corresponding settings in COMSOL Multiphysics can be found on the **Security** page in the **Preferences** dialog box, which you open from the COMSOL Desktop.)

- Select the **Allow batch jobs** check box to allow applications to run detachable batch jobs. These are separate COMSOL Server processes where the simulation is stored on file when the computation is finished. This functionality is used in the Batch, Batch Sweep, Cluster Computing, and Cluster Sweep nodes in the COMSOL Desktop model tree.
- Select **Allow external processes and libraries** to allow applications to start external processes on the computer hosting COMSOL Server. This includes using the built-in `executeOS()` method. This setting also allows external C libraries to be called from methods in an application. The security settings do not extend to methods used to access the model object.

Under **Methods and Java libraries**:

- The **Enforce security restrictions** check box is selected by default. If selected, this check box enforces the following restrictions on methods and Java libraries:
 - Select the **Allow access to system properties** check box to read and write values to system properties such as `System.getProperty("cs.np")` which can be used to determine the number of cores that COMSOL Server currently uses.
 - Select the **Allow changes to the runtime system** check box to allow methods and Java libraries to change the runtime system—for instance, by modifying class loaders.
 - From the **File system access** list, select **Temporary and application files** (the default) to restrict methods and Java libraries to only have access to such files, or select **All files** to allow methods and Java libraries to access all files that the account used to start the COMSOL Server service (default: **LocalService**) has permissions to access on the file system.
 - Select the **Allow access to network sockets** check box to allow methods and Java libraries to open sockets for network access.
 - Select the **Allow control of the network authentication method** check box to allow methods and Java libraries to control the network authentication method used.
 - Select the **Allow access to classes through reflection** check box to allow access to all members in a class through reflection.
 - Select the **Allow access to runtime security settings** check box to allow methods and Java libraries to access security settings.

All check boxes above are cleared by default, enforcing those security restrictions.

SESSIONS

The table a below summarizes the settings in the **Sessions** section.

SETTING	DEFAULT	DESCRIPTION
Max number of concurrent applications per user	4	The maximum number of concurrently running applications per user is four. You can use a lower number to restrict the number of concurrent applications per user.
Idle timeout (s)	0	The maximum idle time in seconds before the user is thrown out and the applications started by that user are shut down. This option makes it possible to reduce resources and licenses required on the server. The default (0) is an infinite timeout time.

SETTING	DEFAULT	DESCRIPTION
Runtime timeout (s)	0	The maximum total elapsed time in seconds before the user is thrown out and the applications started by that user are shut down. This option makes it possible to reduce resources and licenses required on the server. The default (0) is an infinite timeout time.
Username for license checkout	From operating system	Controls what username is logged for checking out licenses when running licenses. Select From operating system to use the name of the user account used to launch COMSOL Server. Select From COMSOL Server to use the name of the COMSOL Server account, which can make it easier to track license usage among users.
Allow reconnecting to running applications	On	Allows users to reconnect to previously launched applications and come back where they left off. Disconnecting and reconnecting is currently not possible while solving, for example.
Show side menu for applications	On	Enable or disable the side menu that is available when running applications in a web browser.

PRELAUNCHING

To allow faster launching of applications, application processes are prelaunched on the server. Additionally, a number of applications are preloaded in these processes. Typically the default settings work for most cases. The table below summarizes the settings in the **Prelaunching** section.

SETTING	DEFAULT	DESCRIPTION
Number of recently run applications to preload	1	Preloads this number of the most recently run applications.
Default preloaded applications	None	The selected applications are explicitly preloaded. If there is overlap with the most recently run applications, the overlapping applications are still only loaded once.

RECOVERY FOR APPLICATION BUILDER

The table below summarizes the settings in the **Recovery for Application Builder** section.

SETTING	DEFAULT	DESCRIPTION
Save recovery file	Off	Determines if launched applications should be configured to automatically use recovery files. This means that failed applications can be recovered by accessing these files.
Folder for recovery files	HOME\comsol\v52server\recoveries	Common storage area for recovery files.

Click **Save** to store the updated preference settings.

EMAIL

In the **Email** section you can define the settings for sending emails from applications:

SETTING	DESCRIPTION
Host	The email server's host name.
Port	The port number (default: 25)
Connection security	Use no connection security (None; the default), or use an encrypted connection for emails sent from applications by selecting STARTTLS or TLS/SSL.
User	The user account for logging in to the email server; if required by the server.
Password	Password for the user account, if required by the server.
From address	The sender's email address for emails sent from applications.

MULTICORE

The table below summarizes the settings in the **Multicore** section.

SETTING	DEFAULT	DESCRIPTION
Number of cores	Auto	Determines if the number of cores assigned to each application is determined automatically (Auto) or by manual input (Manual). The automatic number of cores is balanced for allowing four apps to run at the same time on each server.
Manual	All cores	Number of cores assigned to each application in the manual case. The default number is 1.

Each user may have up to four (4) applications running at the same time. Assuming that intense computations are performed only with one of these applications at a time, then the best performance is achieved with one core per user. Adjust the **Number of cores** setting accordingly with respect to expected number of concurrent users, concurrently running applications, and the number of cores on the computer hosting COMSOL Server.

LAUNCH APPLICATION ON LOGIN

In the **Launch application on login** section, select the application to launch from the **Application** list. The default is Off (no application is launched). If an application is selected here, it is automatically started when a non-administrative user logs in. Only administrators can see the full Application Library.

COMSOL Server Commands

The general syntax of the COMSOL commands is

```
<command> [<target>] [<options>] [<target arguments>]
```

where square brackets indicate optional arguments. The main command to start COMSOL Server is `comsolserver` (Windows) or `comsol server` (Linux and Mac).

OPTIONS

You can enter various options after the COMSOL Server command and target. The table below lists the options (See [`<options>`] in the command syntax)

available for the `comsol server` command. Always issue these options between the command and the target (if any).

COMSOL SERVER OPTIONS (CURLY BRACKETS INDICATE DEFAULT VALUES)

COMSOL SERVER OPTION	DESCRIPTION
<code>-np <no. of processors></code>	Number of processors.
<code>-ipv6</code>	Activate IPv6 support.
<code>-c <path></code>	License file path.
<code>-prefmdir <path></code>	Preference directory.
<code>-tmpdir <path></code>	Temporary file directory.
<code>-autosave {on} off</code>	Control saving of recovery files.
<code>-recoverydir <path></code>	Path to recovery directories.
<code>-comsolinifile</code>	Specify custom path to .ini-file used when starting COMSOL Server.
<code>-forcegcc</code>	Force load of GCC libraries (Linux).
<code>-forcecomsolgcc</code>	Force load of GCC libraries shipped with COMSOL (Linux).

For the `-tmpdir` option, the COMSOL software uses the specified directory to store temporary files. Use the `-prefmdir` option to specify the directory where COMSOL Server stores the preference file.

Running Applications

COMSOL applications can be run by connecting to COMSOL Server from a web browser, or from a COMSOL Client for Windows[®]. The COMSOL Client for Windows[®] allows a user to run applications that require a LiveLink[™] product for CAD, as described in [Running Applications in the COMSOL Client](#). In addition, the COMSOL Client for Windows[®] supports interactive graphics in 1D, 2D, and 3D.

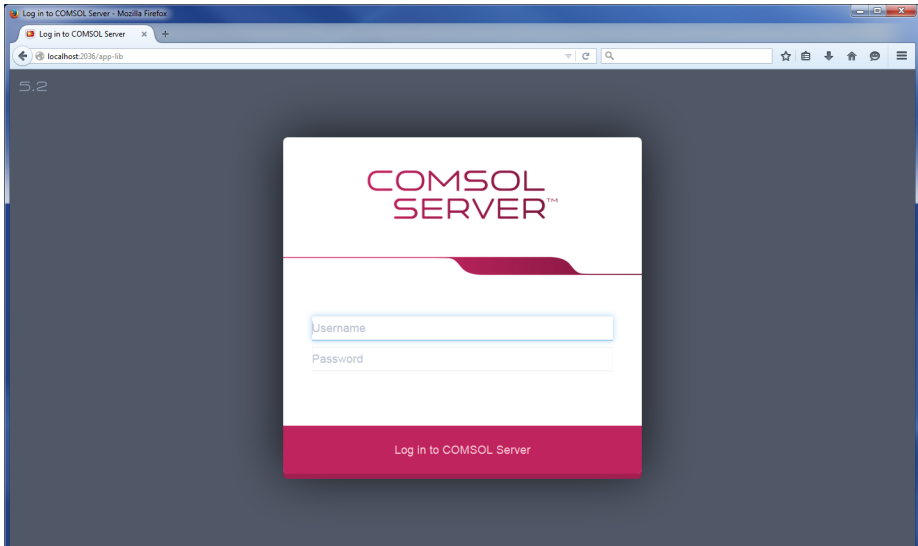
Running applications in a web browser does not require any installation and no web browser plug-ins are needed. Running an application in a web browser supports interactive graphics in 3D using WebGL[™] technology. However, selecting objects in graphics using mouse clicks is not supported when running in a web browser.

After launching an application in the Application Library, it will become available under **Running Applications** and can be reconnected to, even if the original browser tab or COMSOL Client window housing the application has been closed. To shut down the running application, click its stop button in the Application Library or use the side menu available in the top-right corner if running in a web browser. Administrators can shut down applications from the **Monitor** page.

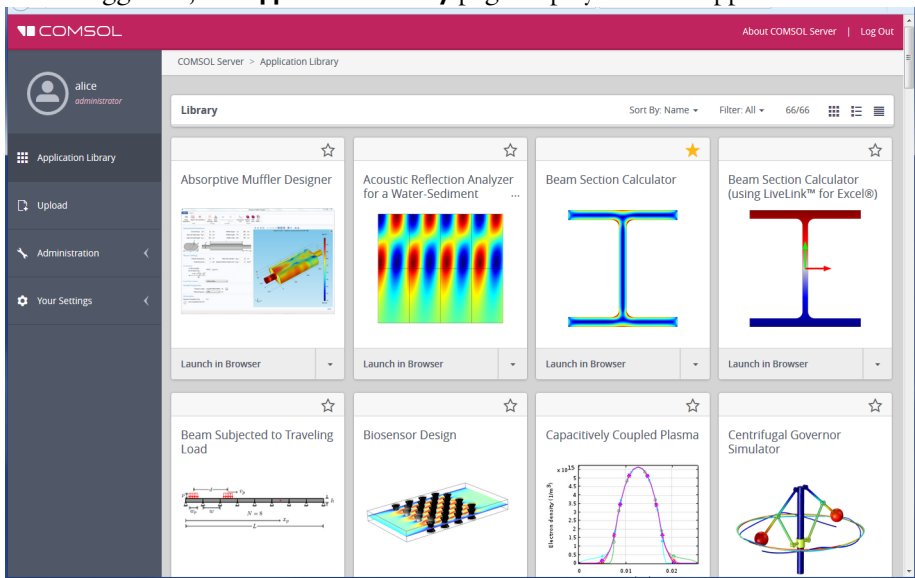
You can create shortcuts to quickly access the most used applications from your desktop. First, open up an application's detailed view by clicking on its name or image. From there, you have the option to create a shortcut link that opens the application, either in COMSOL Client or in your browser.

Running Applications in a Web Browser

Using a web browser you can point directly to the computer name and port number of a COMSOL Server web interface—for example, `http://abc.mycorp.com:2036`. You need to provide a username and password to log in using the web interface.

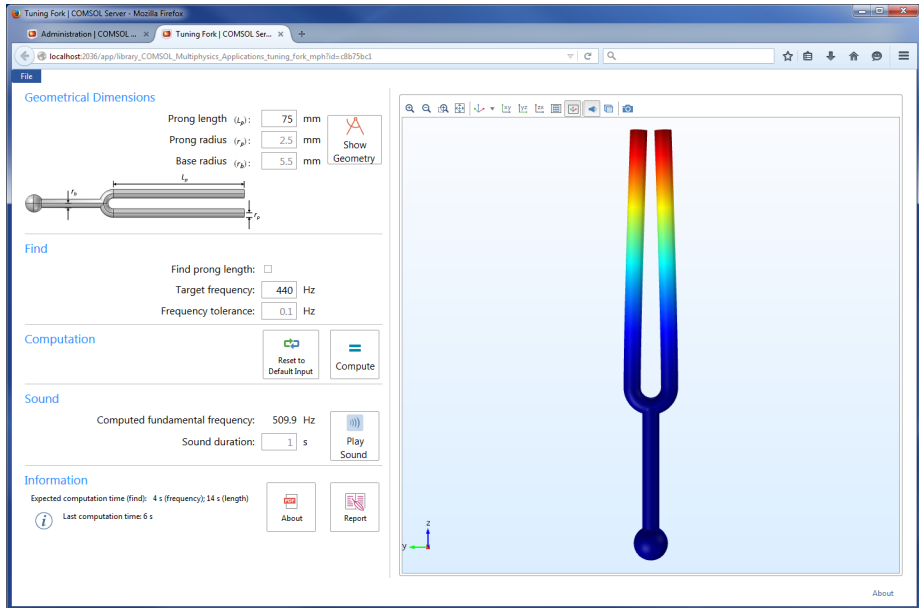


When logged in, the **Application Library** page displays a list of applications to run.



When logged in as user or guest, the Administration options, in the panel to the left, are not visible.

Click **Launch** to run an application. Applications are run in separate tabs in the browser.




Users can upload applications and determine which groups have access. Guests can only run applications.

Click on the application icon to show a description and some general information about that application.

Tuning Fork x

Author:	COMSOL
Owner:	COMSOL
Filename:	tuning_fork.mph
Size:	614 KB
Visibility:	Public
Created in:	COMSOL 5.2 (snapshot) (Build: 151)
Computation time:	4 s (frequency); 14 s (length)
Created:	Oct 26, 2015
Last modified:	Oct 26, 2015
Products used:	COMSOL Multiphysics



With this application you can specify the prong length of a tuning fork and compute the resulting fundamental eigenfrequency. Conversely, you can specify a target frequency and compute the corresponding prong length.

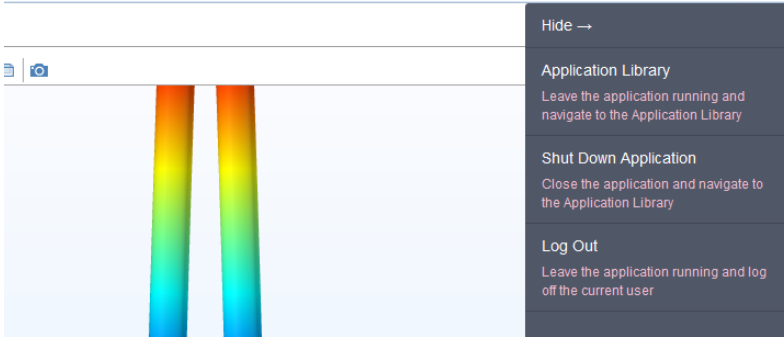
[Launch in Browser](#) [Create Browser Shortcut](#)

In the information display, under **Products used**, you find the COMSOL products used to create and run the application. From this display, you can also launch the application and create a shortcut for running the application in a browser on using COMSOL Client.

Click the **Add to Favorites** button (star) to add to add that application as a favorite application. You can filter the list of applications in the Application Library to only include the favorite applications. For an application already marked as a favorite, click the star next to the application under **Favorites** to remove it from the set of favorite applications

SIDE MENU FOR APPLICATIONS

When running applications in a web browser, users can access some actions directly by pointing to the top-right corner (the following figure shows a close-up of the side menu).



The following options are available, depending on the preference settings for reconnecting to running applications and launching applications on login:

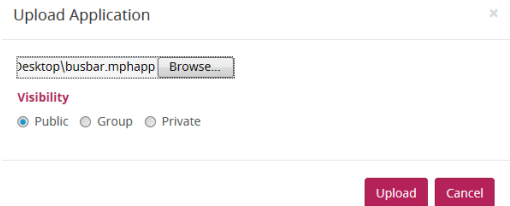
- **Application Library** (if **Launch application on login** is off): Leave the application running and navigate to the Application Library.
- **Shut Down Application** (if **Allow reconnecting to running applications** is on): Close the application and navigate to the Application Library, if **Launch application on login** is off, or just close the application, if **Launch application on login** is on (an application is selected from the **Application** list).
- **Log Out**: Leave the application running and log off the current user, if **Allow reconnecting to running applications** is on, or close the application and log off the current user, if **Allow reconnecting to running applications** is off.

UPLOADING AND EDITING APPLICATIONS

As a user or administrator, you can expand the Application Library by uploading applications (MPH-files). Click **Upload**, in the panel to the left, to open the **Upload Application** dialog box.

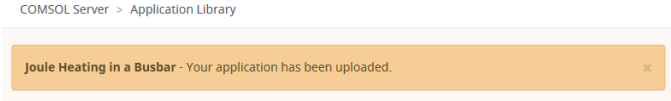
A screenshot of the 'Upload Application' dialog box. At the top, it says 'Upload Application' with a close button (x). Below that is a file selection field with a 'Browse...' button. Underneath is a 'Visibility' section with three radio buttons: 'Public', 'Group', and 'Private' (which is selected). At the bottom, there are two buttons: 'Upload' and 'Cancel'.

Click **Browse** to browse and select the application to upload. Then select an option under **Visibility: Public, Group, or Private** (the default). A public application is available to all users.

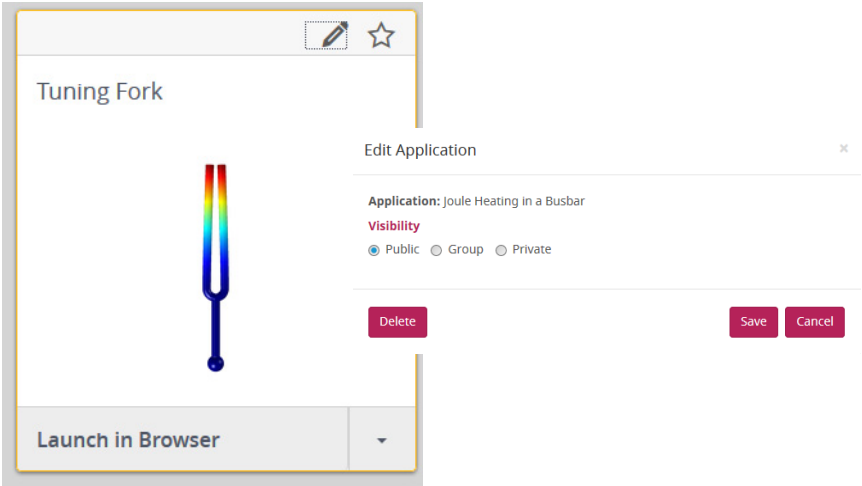


An application with a group visibility is available to members of the groups that you select under **Groups**. A private application is available only to the user who uploads it.

When you have uploaded an application, a message **Your application has been uploaded** appears at the top of the COMSOL Server window. The uploaded application gets an orange border to identify that it has recently been uploaded.



For applications that have been uploaded, click the **Edit** button to the left of the favorites star to open the **Edit Application** dialog box.

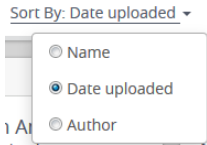


This dialog box contains a **Delete** button to delete the application from the Application Library and a **Save** button to save any new visibility settings.

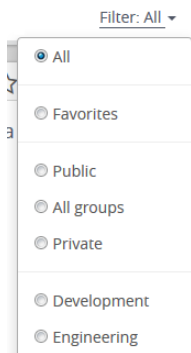
SORTING AND FILTERING APPLICATIONS

The menu at the top of the Application Library window contains options for sorting and filtering the applications:

- From the **Sort By** list, choose to sort the applications by **Name** (alphabetically), which is the default, **Date uploaded** (showing the latest uploaded application first), or **Author**.

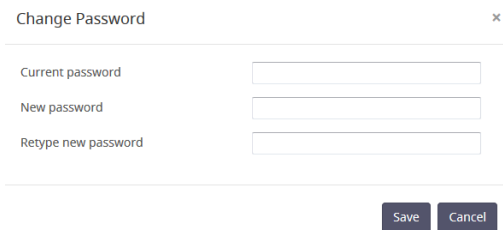


- From the **Filter** list, choose **All** (the default); **Favorites**; or one of **Public**, **All groups**, or **Private**, or any available group.



CHANGING PASSWORD

Under **Your Settings** in the menu to the left, click **Change Password** to open a **Change Password** dialog box where you can change the password used to log in to COMSOL Server.

A screenshot of a "Change Password" dialog box. The dialog has a title bar with "Change Password" and a close button (x). It contains three input fields: "Current password", "New password", and "Retype new password". At the bottom, there are two buttons: "Save" and "Cancel".

LIMITATIONS WHEN RUNNING APPLICATIONS IN WEB BROWSERS

When you create applications for running in a web browser, make sure you use the grid layout mode in the Application Builder. This will ensure that the user interface layout adapts to the size and aspect ratio of the browser window. For low-resolution displays, make sure to test the user interface layout in the target platform to check that all form objects are visible. Applications that contain resizable graphics forms may not fit in low-resolution displays. In such cases, use graphics with fixed width and height to make sure all form objects fit in the target browser window.

When running in a web browser, the interactive selection of domains, boundaries, edges, and points is not supported. The LiveLink™ products for CAD software packages are not supported when running in a web browser.

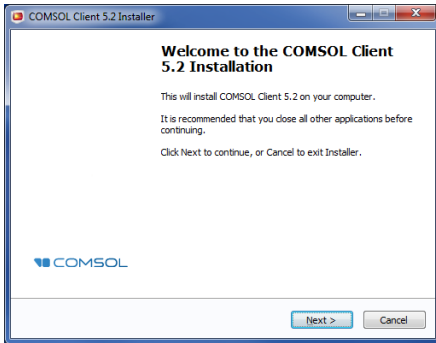
When running COMSOL applications in web browsers for smartphones and certain tablets, not all functionality is supported. Typical limitations include the ability to play sounds or open documents. In addition, file upload and download may not be supported.

Running Applications in the COMSOL Client

As an alternative to using a web browser for running applications, the COMSOL Client for Windows® can be used to connect to COMSOL Server and run applications natively in the Windows® operating system. This typically gives better graphics performance and supports interactive graphics in 1D, 2D, and 3D. In addition, the COMSOL Client for Windows® allows applications that require a LiveLink™ product for CAD, as listed below.

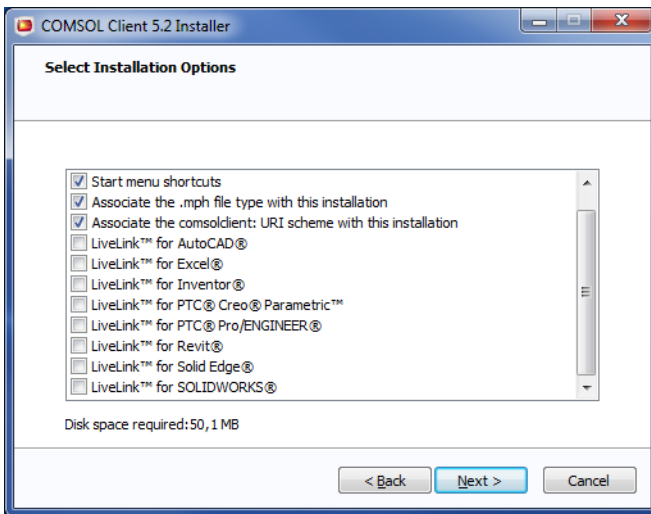
You can install the COMSOL Client together with COMSOL Server. You can also download the COMSOL Client from www.comsol.com/client-download. In the download page, you can choose between a 32-bit and a 64-bit version and the corresponding installation files are: `COMSOL52_client_win32.exe` and `COMSOL52_client_win64.exe`, respectively. The size of an installation file is about 40 MB and expands to about 70 MB in the installation.

Double-click the download file to start the COMSOL Client installer:



In the next few steps of the installer, accept the license agreement and choose the installation folder.

In the step **Select Installation Options** you get the options shown in the figure below.

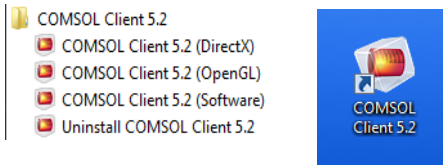


The following LiveLink™ products are available in the COMSOL Client:

- LiveLink™ for AutoCAD®
- LiveLink™ for Excel®
- LiveLink™ for Inventor® (One Window interface not available)
- LiveLink™ for PTC® Creo® Parametric™
- LiveLink™ for PTC® Pro/ENGINEER®
- LiveLink™ for Revit®

- LiveLink™ *for* Solid Edge®
- LiveLink™ *for* SOLIDWORKS® (One Window interface not available)

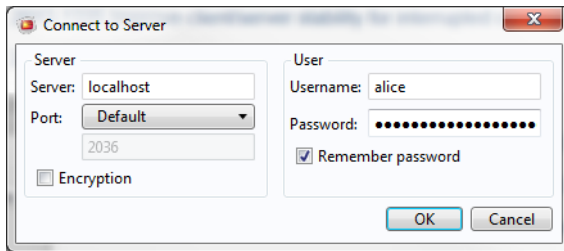
Once installed, double-click the Desktop or use the **Start** menu icon to start.



There are three **Start** menu options depending on the graphics renderer you want to use: **DirectX**, **OpenGL**, and **Software**. When clicking the Desktop icon, the default **OpenGL** renderer will be used. If the **OpenGL** renderer fails to function properly—for example, due to limitations in the graphics card—then the COMSOL Client shuts down. The next time you start the COMSOL Client, **Software** rendering will be used as a fallback renderer. The **OpenGL** and **DirectX** options use hardware graphics acceleration and give higher performance on supported graphics cards.

The installation options also let you associate the MPHAPP-file type with the COMSOL Client installation.

Before you can use the COMSOL Client to run applications, you must log in to the COMSOL Server web interface with a valid username and password.



Logging in from the COMSOL Client displays a COMSOL Server web interface identical to that seen when logging in from a web browser. Using the COMSOL Client, applications run as native Windows® applications in separate windows that have a Windows® look-and-feel. For example, applications run in the COMSOL Client may have a Windows® specific ribbon with tabs. When run in a web browser, ribbons are represented by a toolbar.

You can launch an application directly in the COMSOL Client through the COMSOL Server interface by clicking the menu at the lower-right side of the application in the Application Library and selecting **Launch in COMSOL Client**.

For more information on running applications, see [Running Applications in a Web Browser](#).

Running Applications that use LiveLink Products

Most of the LiveLink™ products can be used in applications run with COMSOL Server. However, in some cases the functionality is limited compared to running with a COMSOL Multiphysics license that includes the COMSOL Desktop. Depending on the LiveLink product, software components are installed with the COMSOL Client or COMSOL Server. The table below summarizes where the software components are installed and which functionality is available.

LIVELINK PRODUCT	LOCATION OF SOFTWARE COMPONENTS	FUNCTIONALITY
LiveLink™ <i>for</i> MATLAB®	Server	Support is limited to function calls from the Global Definitions node in the model tree. Can be used only when accessing an application in a web browser.
LiveLink™ <i>for</i> Excel®	Client	Loading and saving files are supported.
LiveLink™ <i>for</i> SOLIDWORKS®	Client	Same as COMSOL Desktop, with the exception that the One Window interface is not supported. Not supported when running applications in a web browser.
LiveLink™ <i>for</i> Inventor®	Client	Same as COMSOL Desktop, with the exception that the One Window interface is not supported. Not supported when running applications in a web browser.
LiveLink™ <i>for</i> AutoCAD®	Client	Same as COMSOL Desktop. Not supported when running applications in a web browser.
LiveLink™ <i>for</i> Revit®	Client	Same as COMSOL Desktop. Not supported when running applications in a web browser.
LiveLink™ <i>for</i> PTC® Creo® Parametric™	Client	Same as COMSOL Desktop. Not supported when running applications in a web browser.

LIVELINK PRODUCT	LOCATION OF SOFTWARE COMPONENTS	FUNCTIONALITY
LiveLink™ <i>for</i> PTC® Pro/ENGINEER®	Client	Same as COMSOL Desktop. Not supported when running applications in a web browser.
LiveLink™ <i>for</i> Solid Edge®	Client	Same as COMSOL Desktop. Not supported when running applications in a web browser.

Running COMSOL Server on Multiple Computers

Running COMSOL Server on multiple computers allows for supporting more simultaneous users and concurrent applications than a single computer would support. The main COMSOL Server instance is called Primary and the rest are called Secondary. The Primary server is used for all incoming connections—for example, to show the web interface or to run applications in a web browser or with COMSOL Client. The actual work of running the applications is offloaded to the Secondary server computers.



A prerequisite for running COMSOL Server on multiple computers is that there is a Shared working directory on the network that is accessible by all Primary and Secondary servers. The user account that is used to run the COMSOL Server instances should have read and write access to this directory. See [Setting up a Shared Working Directory](#) for information about how to do this using the Windows operating system, and refer to other documentation sources for sharing a directory on Linux or OS X.

Installing COMSOL Server on Multiple Computers

The installation of COMSOL Server on multiple computers is similar to a regular COMSOL Server installation. You first install the Primary COMSOL Server on one computer and then install Secondary COMSOL Servers on the other computers. During the installation you point out a Shared working directory on the network that must be accessible for COMSOL Server on all of the installed computers.



Optionally it is possible to share a common installation folder on the network for all computers running COMSOL Server, both Primary and Secondary. See the [Sharing a COMSOL Server Installation](#) for more information.

INSTALLING THE PRIMARY COMSOL SERVER

On the **Options** page of the installer, choose **Primary**. On the **Server** page of the installer, select the **Support running COMSOL Server on multiple computers** check

box and browse to your **Shared working directory**. The subdirectory `v52server` will be appended to the working directory path to keep different versions of COMSOL Server apart. Under **Primary server hostname**, the installer fills in a guess for the hostname that the Secondary servers should use to contact the Primary server. This should be a valid hostname that resolves to the primary computer's IP address.

When installing the primary COMSOL Server as a Windows service, the service account must be able to access the shared working directory on the network. For this reason, the default **Service account** changes from **LocalService** to **NetworkService** when you select the **Support running COMSOL Server on multiple computers** check box on the **Server** page. The **NetworkService** account presents itself as the computer's credential on the network, allowing it to access network shares without a regular user account.

If installing COMSOL Server as a Windows service on a computer that is not joined to a domain, the **NetworkService** account cannot be used because computer credentials are not valid on work group networks. A local user account should be entered instead in the **Service account** field.



This user account must be locally available with the same password on all workgroup computers that will run a primary or secondary COMSOL Server, and must have the rights to log on as a service as given in **Local Security Policy > Local Policies > User Rights Assignment > Log on as a service** in the **Administrative Tools** in Windows.

INSTALLING THE SECONDARY COMSOL SERVER

On the **Options** page of the installer, choose **Secondary**. On the **Server** page of the installer, browse to your **Shared working directory** under **Secondary COMSOL Server settings** to automatically load the settings used during the primary installation for the **Primary server hostname**, **Primary server port**, and **Primary server username** fields. If the loaded settings are not correct you can edit them before continuing, for example if the secondary server would have to use a different hostname to reach the primary server.

The path to the **Shared working directory** does not necessarily have to be identical for the primary and secondary installation, as long as it points to the same directory on all installations. For example, the path could be written as `\\ServerName\shared\v52server` on Windows and `/mnt/servername/shared/v52server` on Linux.

Starting COMSOL Server on Multiple Computers

The primary COMSOL Server is started similarly to a regular COMSOL Server installation, either automatically or manually, which is described in [Starting COMSOL Server](#). Once the primary COMSOL Server has started, you can log in with an administrative user and check on the **Monitor** page that the secondary COMSOL Servers have connected.

Secondary COMSOL Servers are also started similarly to a regular COMSOL Server installation. Once the secondary COMSOL Servers are started they periodically try to connect to the primary COMSOL Server. This means that the starting order of the primary and secondary COMSOL Servers is not important

Setting up a Shared Working Directory

SHARING A DIRECTORY IN WINDOWS

The following steps provide a basic procedure for setting up a Shared working directory in Windows[®] for installing COMSOL Server on multiple computers:

- 1 Create a new folder in a convenient location on the computer that should host the share.
- 2 Right-click the folder and choose **Share with>Specific people**.
- 3 Type Everyone and click **Add**.
- 4 Change **Read** to **Read/Write** next to Everyone.
- 5 Click **Share**.
- 6 Note the network path to the shared folder (for example, \\ServerName\shared). This is what you will use during the installation.

Note that this procedure will give anyone on the network access to the share. Once you know which user accounts and server computers that need to access the share it is recommended to limit the access to those. Exactly how the shares should be set up depends on for which user account COMSOL Server has been installed. The default on Windows is the **NetworkService** user in the multiple computer case. This is a special account with limited capabilities, which presents itself as the computer on the network, not any specific user. In this case, the shares can be secured as follows:

- 1 Right-click the shared folder and choose **Properties**, then switch to the **Security** tab.
- 2 Click **Edit**, make sure **Everyone** is selected and click the **Remove** button to remove access to everyone.
- 3 Click **Add**, then **Object Types** and make sure **Computers** is selected in the list.
- 4 Click **OK** and type a semicolon-separated list of all the computers where COMSOL Server runs under the `NetworkService` account. (Alternatively, if `NetworkService` has not been used, enter the accounts that COMSOL Server runs under.)
- 5 Click **OK** and verify that the entries are added to the list.
- 6 Select the new entries and select the **Full control** check box (under **Allow**) for each one.
- 7 Click **OK** and **Close**.

Network administrators can also make use of groups to more easily manager access to the shared directory.

SHARING A DIRECTORY IN LINUX OR MAC

Consult the documentation that came with the operating system for information about sharing directories on the network.

Sharing a COMSOL Server Installation

As an alternative to installing the secondary COMSOL Servers separately on each computer, it is possible to launch the secondary COMSOL Server processes from the primary installation directory. To do this, first make sure that the computers that should run the secondary COMSOL Servers have read access to the primary installation directory over the network. Then use the procedure described in the following subsections to launch the secondary COMSOL Server.

When secondary COMSOL Servers are launched from the primary installation directory, their settings are read from a separate set of secondary `.ini` files, which are created during the primary installation. This is similar to the automatic loading of settings from the **Shared working directory** during a separate secondary installation.

LAUNCHING THROUGH A SHORTCUT IN WINDOWS

On the computer that should run the secondary COMSOL Server, do the following:

- 1 Navigate to the primary installation directory (for example, \\ServerName\installation\COMSOL52\Server\bin\win64).
- 2 Right-click `comsolserver.exe` and choose **Create Shortcut**. Accept to have it on the desktop because you cannot write to the installation directory.
- 3 Locate the new shortcut, right-click, and open the **Properties**. Add `-secondary` to the end of the **Target** field.
- 4 Double-click the shortcut to launch the secondary COMSOL Server.

INSTALLING AS A SERVICE IN WINDOWS

On the computer that should run the secondary COMSOL Server, do the following:

- 1 Open an administrative console (Windows-key + type `cmd` + right-click it and choose **Run as Administrator**).
- 2 Enter the following command (notice that the spaces after, but not before, the equal signs are mandatory; adapt the network path to match your installation):

```
sc create "COMSOLSecondaryService" binpath=
\\ServerName\installation\COMSOL52\Server\bin\win64\
comsolservicessecondary.exe
obj= "NT AUTHORITY\NetworkService" password= "" start= auto
```

- 3 The service is now installed. Enter this command to start it:
`sc start "COMSOLSecondaryService"`

LAUNCHING ON LINUX AND MAC

Use the procedure described in [Starting COMSOL Server](#) but append the `-secondary` flag to the command.

Configuring COMSOL Server

To operate COMSOL Server, you must set up user authentication (password validation) and authorization (groups and roles) for your users.



One administrator account can be added during installation. You can also create an administrator after installation using `comsolserver.exe` in the Windows[®] operating system or `comsol server` in the OS X and Linux[®] operating systems.

COMSOL Server can maintain its own local user database. This is the easiest way to set up the server. In addition, you can use your operating system's user authentication method.



Using the authentication method of your operating system is only supported when accessing COMSOL Server from a web browser.

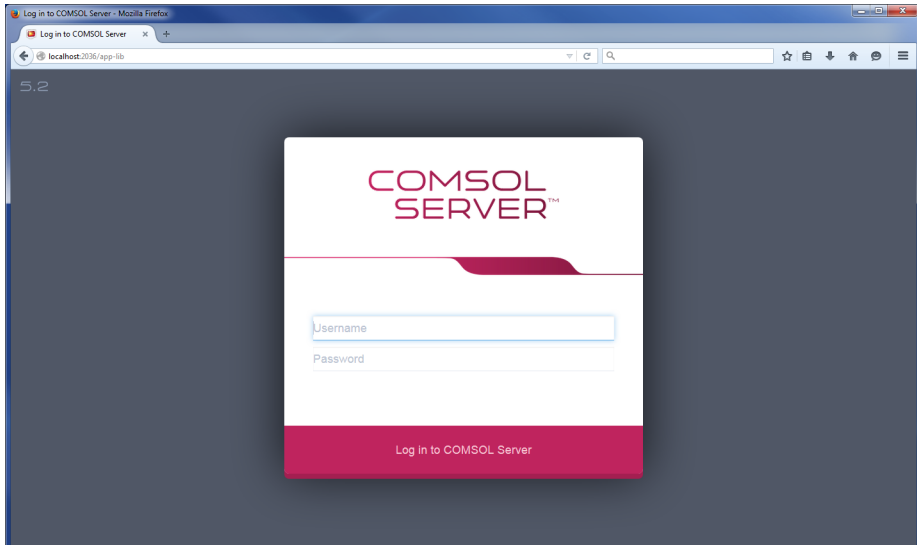
Configuring a Local User Database

Using the COMSOL Server installer, you can set up an initial administrator account that is available when COMSOL Server is started as a service. When COMSOL Server is not started as a service, the initial administrator account is created the first time it is started.

You can add more users to the local user database as soon as COMSOL Server is started. These users are automatically added to the local user database of your COMSOL Server installation.

In a web browser, go to `http://localhost:2036` (if you are accessing it remotely, use the computer name—computer name and domain, or the local IP address—of your server instead of localhost). If the port number 2036 is taken,

then COMSOL Server will use the next available port number: 2037, 2038, and so on. Log in to COMSOL Server with your username and password.

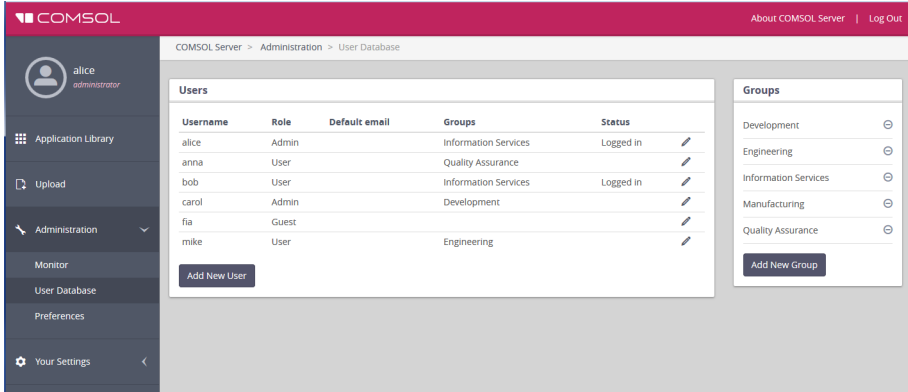


Press return or click **Log in to COMSOL Server**. If you log in for the first time, you must also read the COMSOL Software License Agreement and click **Accept** to enter the COMSOL Server web interface.

You can log out from COMSOL Server by clicking **Logout** in the upper-right corner of the COMSOL Server web interface.

ADDING AND EDITING USERS AND GROUPS

When you run COMSOL Server as administrator, you have access to a **User Database** page under **Administration** in the menu on the left side of the COMSOL Server web interface.



From this page you can manage users and groups for running and accessing applications. Under **Users**, you see all users with their username, role, groups they belong to, and status (if the user is logged in or not). Click a column header for a user property to sort the users in alphabetical order based on that property. Click the **Edit User** button to open an **Edit User** dialog box for a user, where you can change the password, role, and which groups the user belongs to.

Edit User ✕

Username

Default email

Change password

Role

Administrator User Guest

Groups

Consultants Management Production

Click **Save** to store the new user properties. You can also click **Log Out User** to log out a user that is currently logged in, or click **Delete** to remove a user from the list.

Adding a New User

To add a new user, click the **Add New User** button.

New User ×

Username

Password

Repeat password

Default email

Role

Administrator User Guest

Groups

Consultants

Management

Production

In the **New User** dialog box, specify the **Username** and **Password** (you need to confirm the password in the **Repeat password** field). Under **Role**, click **Administrator**, **User** (the default), or **Guest**, depending on the role that you want the user to have (see [Users and Roles in COMSOL Server](#)). Under **Groups**, select the check boxes for the available groups that you want the new user to belong to. Finally, click **Save** to store the new user and its properties. The new user then appears in the list under **Users**.

Adding Groups

You can use groups to ensure that users assigned to the same group can view and run the same applications. Available groups appear on the **User Database** page under **Groups**. To add a new group, click the **Add New Group** button.

New Group ×

Group name

In the **New Group** dialog box, enter a **Group name** and then click **Save**. The added group then appears in the list under **Groups**.

You can control the visibility of the applications so that they are available only for users within a certain group (or groups). Click the **Delete Group** button next to a group to remove that group.

Configuring Windows Authentication

In addition to the local user database, the COMSOL Server installer for the Windows[®] operating system makes it possible to use Windows[®] authentication. To determine which Windows users are allowed to log in, and which COMSOL Server roles they should have, you set up a mapping between Windows[®] groups and COMSOL Server roles.

You will find the login configuration file created by the installer in `<Installation>\bin\tomcat\conf\login.config`. In addition, there is a sample file for Windows[®] authentication available in the file

`<Installation>\bin\tomcat\conf\login.win.config`:

```
ComsolServerLogin {
  waffle.jaas.WindowsLoginModule optional
    principalFormat=both
    roleFormat=fqn;
  com.comsol.jaas.ComsolServiceLoginModule optional
    authenticate=true
    "BUILTIN\Administrators"=ComsolServerAdministrator
    "BUILTIN\Users"=ComsolServerUser
    "Everyone"=ComsolServerGuest;
};

ComsolWebsocketLogin {
  com.comsol.jaas.ComsolServiceLoginModule required;
};
```

By modifying this `login.win.config` file and copying it to the file `login.config` you can change the actual configuration used by the server and thus override any settings made by the installer.

The lines

```
"BUILTIN\Administrators"=ComsolServerAdministrator
"BUILTIN\Users"=ComsolServerUser
"Everyone"=ComsolServerGuest;
```

map the Windows[®] groups Administrators, Users, and Everyone to the roles identifiers ComsolServerAdministrator, ComsolServerUser, and

ComsolServerGuest, corresponding to the COMSOL Server roles, administrator, user, and guest, respectively.

For the details about settings in the configuration file, see the section [Advanced Login Configuration](#) in this chapter.

Finally, use administration tools in Windows® to set up users and groups. For example, use the Control Panel and the User Accounts settings in the control panel.



Using the authentication method of your Windows® operating system is only supported when accessing COMSOL Server from a web browser.

Configuring Active Directory or LDAP

In addition to the local user database and to the Windows Authentication available on the Windows® operating system, it is possible to use a Windows® Active Directory® or LDAP server to authenticate users. This means that you can use your Active Directory® or LDAP usernames and passwords to log in to COMSOL Server.

Configuring COMSOL Server to use an Active Directory or LDAP server for authentication requires editing the configuration file at:

<Installation>\bin\tomcat\conf\login.config. There is a sample file for Active Directory® authentication available in the file

<Installation>\bin\tomcat\conf\login.ad.config:

```
ComsolServerLogin {
    com.sun.security.auth.module.LdapLoginModule OPTIONAL
    userProvider="ldap://ldap.example.com:3268/DC=example,DC=com"
    authIdentity="{USERNAME}@example.com"
    userFilter="(&{(sAMAccountName={USERNAME})}(objectclass=user))"
    authzIdentity="{MEMBEROF}"
    useSSL=false;
    com.comsol.jaas.ComsolServiceLoginModule OPTIONAL
    authenticate=true;
};

ComsolWebsocketLogin {
    com.comsol.jaas.ComsolServiceLoginModule required;
};
```

In addition, a sample file for OpenLDAP is available in the file

<Installation>\bin\tomcat\conf\login.openldap.config:

```
ComsolServerLogin {
} com.sun.security.auth.module.LdapLoginModule REQUIRED
  userProvider="ldap://ldap.example.com/ou=People,dc=example"
  userFilter="(uid={USERNAME})(objectClass=inetOrgPerson)"
  authzIdentity="{MAIL}"
  useSSL=false;
  com.comsol.jaas.ComsolServiceLoginModule required
  authenticate=false;
};

ComsolWebsocketLogin {
  com.comsol.jaas.ComsolServiceLoginModule required;
};
```

Modify the sample files and overwrite *login.config* with the changes to configure Active Directory® or LDAP authentication. You need to replace *ldap.example.com*, *example*, and *com* with the name of your Active Directory® or LDAP server and *DC=example*, *DC=com* with the settings of your Active Directory® or LDAP server, respectively.

You need to add each user and the user's associated role to the *roles.properties* file in <Installation>\bin\tomcat\conf\. COMSOL Server will use the username and password to authenticate. Use the syntax

```
alice=ComsolServerAdministrator;
dave=ComsolServerUser;
carol=ComsolServerGuest;
```

to add roles to the users *alice*, *dave*, and *carol*. *ComsolServerAdministrator*, *ComsolServerUser*, and *ComsolServerGuest* are valid as the right-hand side, representing the administrator, user, and guest roles in COMSOL Server, respectively.

Alternatively, if a user has attempted to log in using an Active Directory® or LDAP username, you can assign a role for that user from the COMSOL Server web interface by editing the automatically created user account under

Administration>User Database.

The LDAP login module that COMSOL Server uses does not allow direct mappings from Active Directory groups to COMSOL Server roles.

For the details about settings in the configuration file, see the section [Advanced Login Configuration](#) in this chapter.



Active Directory® and LDAP authentication is only supported when accessing COMSOL Server from a web browser.

Advanced Login Configuration

COMSOL Server uses the pluggable authentication mechanisms of JAAS (Java[®] Authentication and Authorization Services). Using JAAS configuration files you can configure to use Windows[®] authentication and LDAP authentication. You can also combine local database users and operating system users by merging configurations.



Using the operating system authentication method is only supported when accessing COMSOL Server from a web browser.

LOGIN MODULE CONFIGURATION FILES

The COMSOL Server installation includes prepared login configuration files. Use a suitable file, modify it, and replace the `login.config` file with an edited file to configure the required login module.

Configuration Files in <Installation>\bin\tomcat\conf

FILE NAME	FILE DESCRIPTION	ACTION
login.config	Login configuration file	Contains the login configuration that the running server uses.
login.openldap.config	LDAP configuration sample file	Modify and copy to login.config to use a OpenLDAP configuration.
login.ad.config	Active Directory sample file	Modify and copy to login.config to use a Active Directory configuration.
login.win.config	Windows authentication sample file	Modify and copy to login.config to use a Windows [®] authentication configuration.
login.local.config	Local configuration sample file	Modify and copy to login.config to use a local user database configuration.
login.properties	Initial user and password file	Created by installer. Automatically copied to the <user home>\comsol\v52server\login.properties of the user account that started COMSOL Server the first time the service is started.
roles.properties	Initial policy group file	Created by installer. Automatically copied to the <user home>\comsol\v52server\service\roles.properties of the user account that started COMSOL Server the first time the service is started.

The local user database is represented by two files:

- The `login.properties` file, which contains the local user database. Each row in this file represents a user. The username is followed by an equal sign and a hashed password. The file should only be readable to the account running COMSOL Server.
- The `roles.properties` file, which contains the roles of the users. Each row in this file contains a user. The username is followed by an equal sign and a semicolon-separated list of roles and groups that the user is associated with.

COMSOL LOGIN MODULE

Configurable login modules are used to achieve the desired mechanism, and you can combine multiple modules in an authentication and authorization chain.

A local user database is used by the default JAAS configuration for both authentication (password validation) and authorization (groups and roles). A local user account with administrative privileges can be created during the installation process to allow subsequent login. It is also possible to configure COMSOL

Server to allow logins using nonlocal accounts optionally with a mapping from nonlocal to local groups and roles as a part of the installation process.

The `COMSOLServiceLoginModule` can be used to perform authentication and authorization of users based on the local user database or to perform mapping of nonlocal to local roles and groups. This login module always gives administrative privileges to the user owning the COMSOL Server process and all authenticated users belong to the group *Authenticated*, which gives access to the COMSOL Server web interface.

COMSOLServiceLoginModule Configuration Options

OPTION	VALUES	DESCRIPTION
debug	true/false	Debug information will be printed to the console.
authenticate	true/false	Determines if the module is used for authentication or only for mapping of roles and groups.
non-local-principal	<local-principal>	Any number of mappings from nonlocal role and group names to local; note that multiple nonlocal roles and groups can map to the same local roles or groups but there can be only one mapping per nonlocal role or group.



Other login modules: Any JAAS-compliant login modules can be used as a part of the authentication sequence, but configuration sometimes requires detailed knowledge about the authentication server setup and IT system administrator skills.

JAAS CONFIGURATION FILE SYNTAX

The configuration file is a text file with an arbitrary name and extension containing any number of entries of the form

```

RealmName{
  LoginModuleClassName <behavior>
  <option> = <value>;
}

```

`RealmName` is the name of the login realm this configuration represents, and for COMSOL Server the two required realms are as follows:

- The `ComsolServiceLogin` realm is used for authentication of users through the web interface.
- The `ComsolWebsocketLogin` realm is used for authentication of clients connecting via websockets.

LoginModuleClassName is the full name of a class implementing the LoginModule interface, and in addition to those provided in the Java distribution (like com.sun.security.auth.module.LdapLoginModule), COMSOL Server provides com.comsol.jaas.ComsolServiceLoginModule.

For integrated Windows[®] authentication the waffle.jaas.WindowsLoginModule is also included in the installation.

The <behavior> can be one of the following keywords:

- **required**—must authenticate the user
- **requisite**—no subsequent login modules will run if this fails
- **sufficient**—continues to run the other login modules in the list on failure
- **optional**—at least one optional module must succeed if all are optional

The <option> is one of the valid options for the login module, and <value> is a valid selection for this option. The configuration entry for one login module is terminated by a semicolon, after which any number of additional login module configuration entries can appear. However, there can be only one configuration entry per login module.

The COMSOL Server login configuration file

```
installation-path/bin/tomcat/conf/login.config
```

is created during installation according to the selected options.

A configuration example for integrated Windows[®] authentication:

```
ComsolServerLogin {
  waffle.jaas.WindowsLoginModule required
  principalFormat=both
  roleFormat=fqn;
  com.comsol.jaas.ComsolServiceLoginModule required
  authenticate=false
  "BUILTIN\Administrators"=ComsolServerAdministrator
  "BUILTIN\Users"=ComsolServerUser
  "Everyone"=ComsolServerGuest;
};
```

In this case, the user must be authenticated by the waffle.jaas.WindowsLoginModule, and the com.comsol.jaas.ComsolServiceLoginModule performs a mapping of groups from the Windows[®] account to COMSOL Server roles without authenticating the user.

The following is a configuration example using either the LDAP interface of an Active Directory server for authentication or the COMSOL Server local user database:

```
ComsolServerLogin {
  com.sun.security.auth.module.LdapLoginModule optional
  userProvider="ldap://ldap.example.com:3268/DC=example,DC=com"
```

```

authIdentity="{USERNAME}@example.com"
userFilter="(&(sAMAccountName={USERNAME}))(objectclass=user)"
authzIdentity="{MEMBEROF}"
useSSL=false;
com.comsol.jaas.ComsolServiceLoginModule optional
authenticate=true
examplegroup=ComsolServerAdministrator
;
};

```

- If login is successful with the `LdapLoginModule`, the users belonging to the group `examplegroup` get the `ComsolServerAdministrator` role.
- If login is successful with the `ComsolServiceLoginModule`, only the local user database is used to assign roles to the user.

Setting Up COMSOL Server for Secure Connections

COMSOL Server can be configured to use a server certificate from a keystore file with a password through the `-keystorefile` and `-keystorepass` command line switches. The default keystore file location is `{COMSOL52}/bin/tomcat/conf/keystore.jks` and the default password is `changeit`. If the certificate is signed with a trusted root certificate by a Certificate Authority (CA), web clients will automatically be redirected to use the secure connection. In case the certificate is not trusted by default, the public part of it will have to be added to the trust store used by the client. On Windows this can be done using the Certificate snapin module for the Microsoft Management Console (run `certmgr.msc`) by importing the server certificate to the trusted root certificate issuers category, or via other centralized computer management tools. The certificate can also be downloaded using a standard web browser by inspecting the details of a website or exported from the trust store on the server computer. COMSOL Server uses the central trust store by default on Windows, but on Mac and Linux the trust store of the Java Virtual Machine (JVM), found in the file

`{COMSOL52}/java/[glnxa64 or maci64]/jre/lib/security/cacerts` is used unless the system property `javax.net.ssl.trustStore` has been set. The `keytool` command found in `{COMSOL52}/java/[glnxa64 or maci64]/jre/bin` can be used to import the server certificate into the trust store used by the client. Start a command window and run

```

keytool -import -alias COMSOLServer -file <file.crt> -keystore <cacerts>
-trustcacerts

```

with the `<*>` entries replaced by the paths to the actual files. When prompted, enter the keystore password (which is `changeit` by default for the JVM).

Note that COMSOL Server interprocess communication via websockets will also require the certificate to be present in the trust store used by COMSOL Server when acting as a client.

To create a self-signed certificate on your computer, start a command window and run

```
keytool -genkey -alias COMSOLServer -keypass <password> -storepass  
<password> -dname "cn=<ServerHostName>, ou=<Org>, o=<Unit>,  
c=<CountryCode>" -keyalg RSA
```

after having replaced the `<*>` entries with the information and the passwords that you want to use. Note that the password used for the keystore by COMSOL Server must be specified with the `-keystorepass` switch.

Resetting the Administrator Password

How to reset the administrator password of COMSOL Server depends on if it was installed with a shared working directory or not, and if not, whether it was installed as a Windows service (default for Windows) or as a Regular executable. (Note that this operation will delete all regular users from the User Database.)

WINDOWS SERVICE

- 1 Stop the COMSOL Server service using the **Stop COMSOL Server** shortcut on the **Start** menu.
- 2 Delete the `login.properties` and `service\roles.properties` files from the `v52server` directory, which is typically located at
`C:\Windows\ServiceProfiles\LocalService\.comsol\v52server`
(The location depends on **Service account** specified while installing; by default, it is `LocalService`.)
- 3 Run the COMSOL Server installer in **Repair** mode and enter a new **Default local administrative user**.
- 4 Normally the COMSOL Server service is configured to start automatically; otherwise, start it again using **Start COMSOL Server**.

REGULAR EXECUTABLE

- 1 Stop the COMSOL Server executable by typing `close` in the console window, or killing its process.
- 2 Delete the `login.properties` and `service\roles.properties` files from the `v52server` directory, which is typically located at
`%USERPROFILE%\ .comsol\v52server` (Windows)
`~/ .comsol/v52server` (Linux/Mac OS X)
- 3 Run the COMSOL Server installer in **Repair** mode and enter a new **Default local administrative user**. (If COMSOL Server will never be run using the `-service` parameter, you can skip this step.)
- 4 Start COMSOL Server again.

SHARED WORKING DIRECTORY

This option is available with **Support running COMSOL Server on multiple computers** selected during installation.

- 1 Stop the primary COMSOL Server process. (See Step 1 above for the two cases of a [Windows Service](#) or [Regular Executable](#).)
- 2 Run the COMSOL Server installer in **Repair** mode and enter a new **Default local administrative user**.
- 3 If not configured to start automatically, start COMSOL Server again.

Index

- A**
 - adding groups 59
 - adding users 59
 - add-on products 5
 - administration in COMSOL Server 29
 - administrator password, resetting 68
 - administrator role 6
 - Application Library 40
 - applications
 - deleting 44
 - editing 43
 - filter 45
 - launching 41
 - sort by 45
 - sorting 45
 - upload 41
 - uploading 43
 - authentication 56
 - in Windows 14
- B**
 - batch jobs 33
 - boot scripts 26
 - Bourne shell commands 26
- C**
 - changing password 45
 - classes through reflection 34
 - COMSOL Client 5, 28, 46
 - installation 10, 47
 - running applications in 46
 - COMSOL commands
 - Windows 37
 - COMSOL Multiphysics 5
 - COMSOL Server 5
 - administration 29
 - installing 8
 - logging in to 27
 - starting 18
 - COMSOL Software License Agree-
 - ment 28, 57
 - configuring user database 56
- D**
 - deleting applications 44
 - Desktop shortcut 48
 - DirectX rendering 48
- E**
 - editing applications 43
 - external processes and libraries 33
- F**
 - file download 46
 - file system access 34
 - file upload 46
 - finishing installation 16
 - firewalls 17
- G**
 - graphics, interactive 39
 - grid layout mode 46
 - group 44
 - groups, adding 59
 - groups, of users 6
 - guest role 6, 29, 40, 41
- I**
 - install step, installation 15
 - installation
 - finish 16
 - install step 15
 - license 9
 - options 10
 - server 11
 - installing COMSOL Server 8
 - in Linux 16
 - in OS X 16
 - in Windows 8
 - interactive graphics 39
 - IPv6
 - Windows 38
- J**
 - JAAS 63

- L**
 - language, to use 32
 - launching application on login 37
 - launching applications 41
 - LDAP 7, 14, 15, 61
 - license, installation 9
 - Lightweight Directory Access Protocol 7
 - LiveLink™ products 46, 47, 49
 - local administrative user 13
 - local user database 56
 - logging in to COMSOL Server 27
 - login configuration files 63
 - login realm 65
 - low-resolution displays 46
- M**
 - Monitor page 30
 - MPHAPP-file 48
 - multicore settings 37
- N**
 - network authentication method 34
 - network sockets 34
- O**
 - open documents 46
 - OpenGL rendering 48
 - options, installation 10
- P**
 - password, changing 45
 - play sounds 46
 - port number 24
 - preferences 32
 - email 36
 - files 32
 - for prelaunching applications 35
 - launching application on login 37
 - multicore 37
 - recovery for Application Builder 36
 - security 33
 - sessions 34
 - visualization 33
 - Preferences page 32
 - prelaunching applications 35
 - primary servers 10
 - private 44
 - products, used in application 42
 - public 44
- R**
 - removing users 58
 - resetting administrator password 68
 - resizable graphics 46
 - roles, in COMSOL Server 6
 - running applications
 - in a web browser 39
 - in the COMSOL Client 46
 - runtime security settings 34
- S**
 - secondary servers 10
 - security
 - restrictions 34
 - settings 33
 - server, installation 11
 - shortcuts, to applications 39
 - side menu, for applications 43
 - smartphones 46
 - sockets 34
 - software license agreement 28, 57
 - Software rendering 48
 - sorting applications 45
 - Start menu shortcut 48
 - starting COMSOL Server 18
 - in Linux 25
 - in OS X 27
 - in Windows 23
 - system properties 34
- T**
 - tablets 46
 - TCP connections 17
 - theme, for applications 32
 - tmpdir 38
- U**
 - uploading applications 41, 43
 - used products, in application 42
 - user authentication 56
 - user database 56

User Database page 31

user role 6, 29, 40, 41

users

adding 59

COMSOL Server 6

removing 58

V visibility 44

W web browser 5

running applications in 39

web implementation of an application 5

WebGL 39

Windows Active Directory 61

Windows Authentication 7, 14

